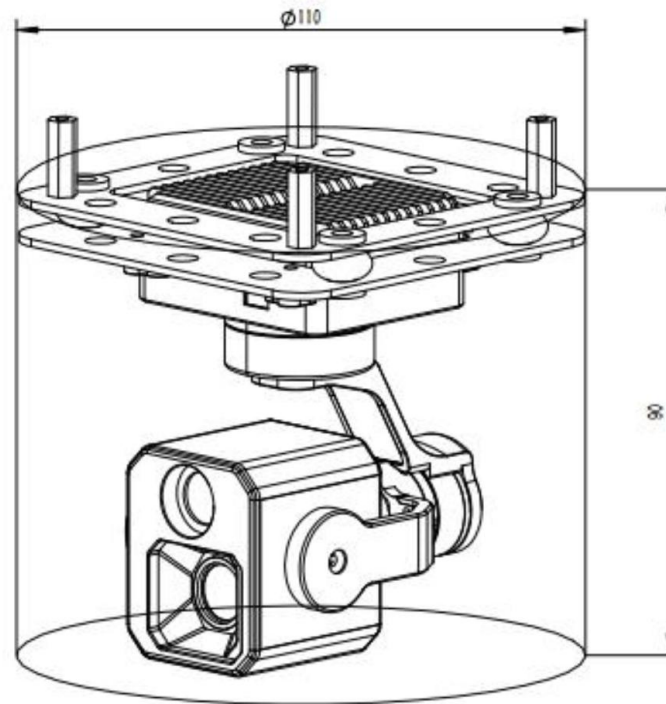


### Advantage

- 4K +1080P visible light camera
- Day and night switch
- Multiple picture in picture modes
- Standard RTSP stream output
- TF card 2 ways recording
- digital zoom
- AI Target Detection and Tracking
- HDMI and IP dual output
- Network, UART, and SBUS control
- Lightweight, 160g

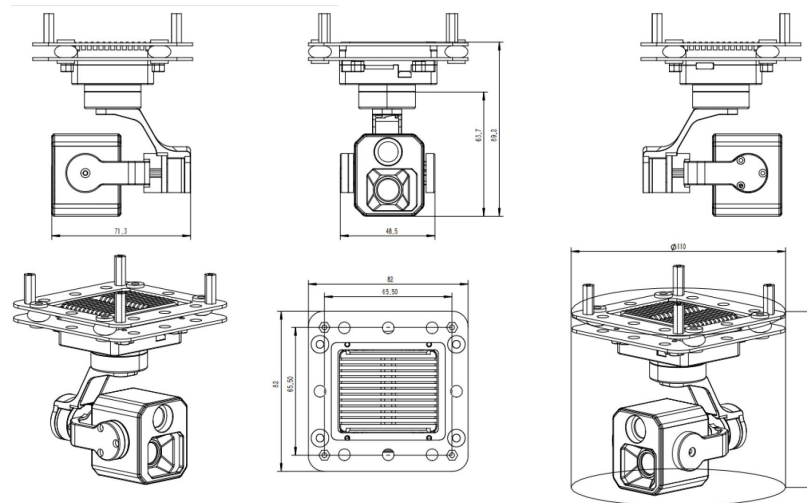
### Overall Structure





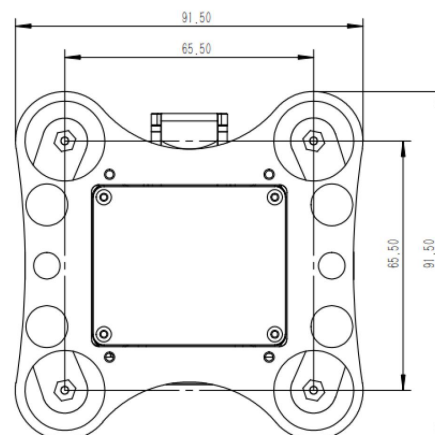
Voltage		3S-6S ( 12V-26.2V )
Power		6.6w
Technical Parameters	Roll Angle	-40°~+40°
	Pitch Angle	-30°~+100°
	Yaw Angle	-140°~+140°
	Jitter Angle	±0.02°
	Horizontal Jitter Angle	±0.03°
	One-Click Restore	One-click restore to the initial position
	Adjustable Gimbal Speed	When the PTZ rotates, it conducts speed adaptation based on the current speed mode and the multiple of visible light camera.
	Control mode	Support network IP, SBUS and serial port control
4K camera Parameters	CMOS size	8 Mega Pixels CMOS SENSOR
	Digital Zoom	7x Digital Zoom
	Compressed storage mode	H264, H265, video streaming local TF storage 4K/1080p
	Field Angle (FOV)	25mm lens, FOV: 10.5°×7.8°
1080P camera Parameters	CMOS size	2 Mega Pixels CMOS SENSOR
	Digital Zoom	9x Digital Zoom
	Compressed storage mode	H264, H265, video streaming local TF storage 1080p
	Field Angle (FOV)	6mm lens, FOV: 60°× 43°
Target recognition and tracking	Min tracking target size	16×16 pixels
	Max tracking target size	256×256 pixels
	Target Memory Time	2 seconds
	Tracking speed	50 Pixel/Frame max
	Simultaneous detection qty	100 targets max
	Recognized categories	Human and Vehicle
	Min detection target size	32×32 pixels
HDMI video		Micro-D HDMI 1080P 60fps
Network output mode		1080P 30fps /4K 30fps
Gimbal Size		φ:110mm H:90mm
Working Condition		-10°C to +60°C / 20% to 80% RH
Storage Environment		-20°C to +80°C / 20% to 95% RH
Main applications		UAV aerial photography
Weight		160±10g

## Outline Structure

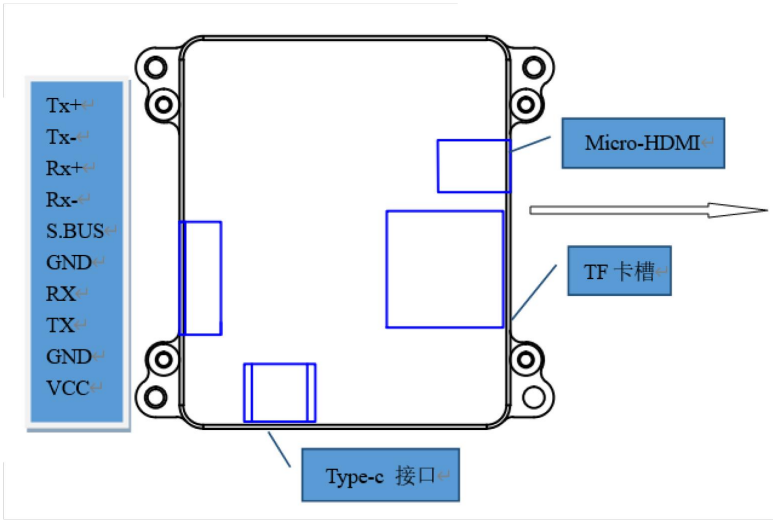


## Installation Dimensions

The distance between the installation holes of the shock absorber plate is 65.5mm \* 65.5mm;  
Installation hole size: M2.5



# Connection Application Diagram



NO	Moded	Interface Type	Interface definition	Function
1	10PIN Port	Power interface	VCC	DC 12V-26.2V
2		Power interface	GND	GND
3		Signal	TX	Uart send
4		Signal	RX	Uart receive
5		Signal ground	GND	GND
6		communication interface	S. BUS	S. BUS Control input
7		communication interface	Rx-	Network interface
8		communication interface	Rx+	Network interface
9		communication interface	Tx-	Network interface
10		communication interface	Tx+	Network interface

\*Due to the product upgrade, the appearance / size / weight / power consumption may change slightly. Please contact the sales department for the latest data. Thank you for your understanding.

---

**CONTACT CHINA MONEYPRO GROUP NOW:**

**EMAIL: [SALES@MONEYPROUAV.COM](mailto:SALES@MONEYPROUAV.COM)**

**MOBILE: +86-18126437260 (WHAT'S UP) MS. AMY LUO**