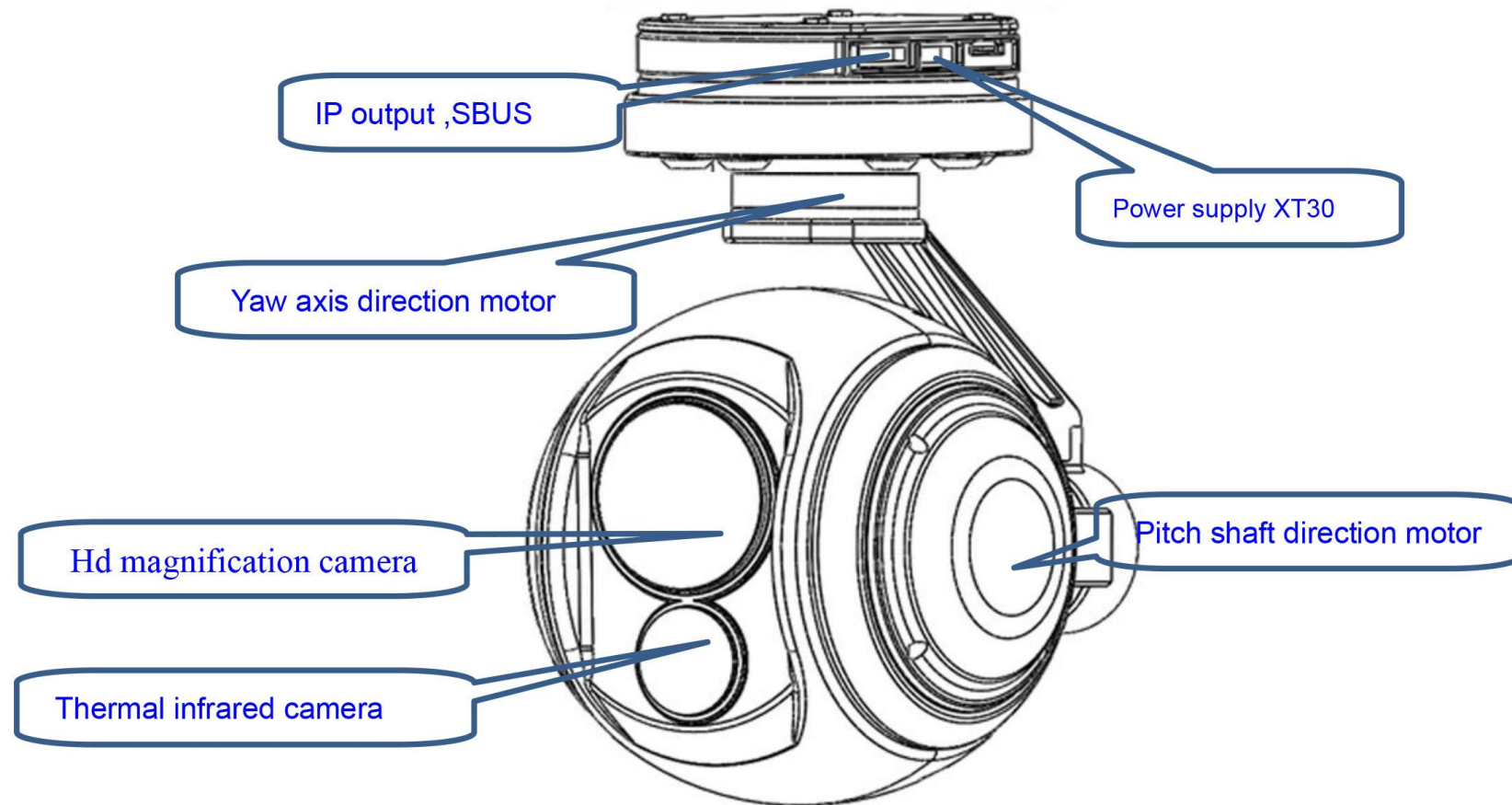



Functional characteristics

- 30HD x 4k visible light+ 640 thermal imaging
- A variety of thermal imaging pseudo-color modes
- Multi-picture-in-picture mode
- Zero-second real-time switch
- 3-axis stabilization gimbal
- Network and UART Control
- Menu Adjustment Parameters
- Support nine times digital zoom
- Single TF card double record, network operation TF card

Whole structure

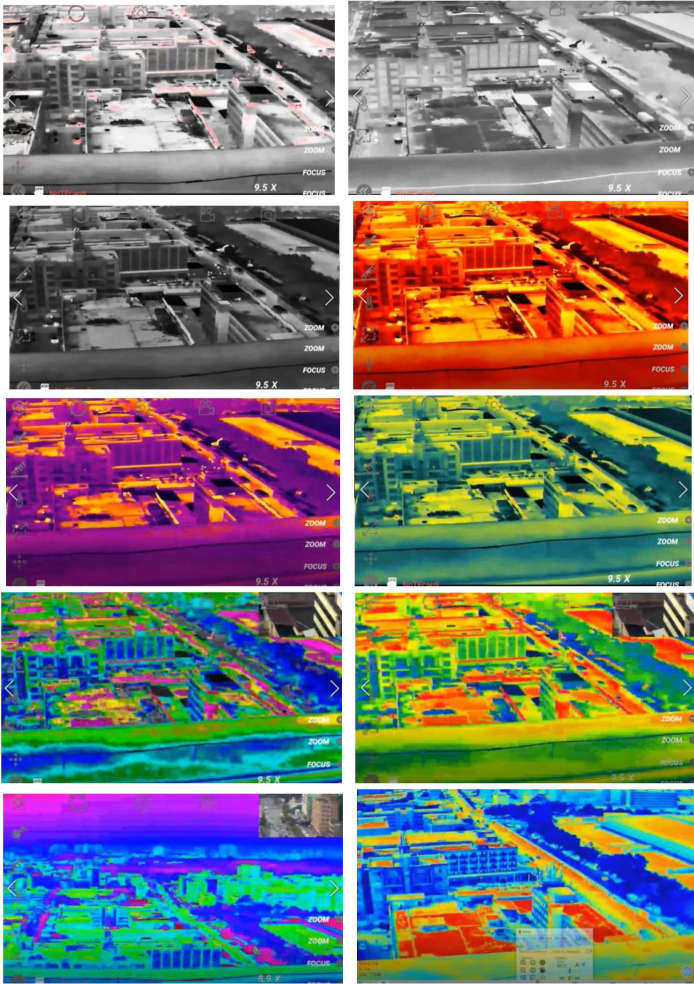


		
Voltage		3S / 6S
Power		Dynamic 10W
Operating characteristic	Roll Angle action range	-45~+45°
	Pitch action range	-45~+135°
	Yaw angle action range	360°Stepless Rotation
	The amount of angular jitter in pitch and roll direction	±0.02°
	The amount of horizontal Angle jitter	±0.03°
	One-key return function	One-click automatic quick return to the initial position
	The speed of the gimbal control is adjustable	The speed adaption is carried out based on the current speed mode and the multiple of the visible light camera.
	Control mode	Support network IP control and serial port control (optional SBUS and PWM control)
White light camera parameters	CMOS Size	1/3-inch 8-megapixel CMOS SENSOR
	Optical zoom	30x HD optical zoom lens, f=4.5±10%~135±10%mm
	Digital Zoom	9x digital zoom
	focusing time	Real-time fast focusing function, focusing time <1S
	Video output	RTSP code stream, IP network output4K, 1080P,video streaming
	Field angle (FOV)	D : WIDE 67.8°±5% TELE 2.77°±5% H : WIDE 59.8°±5% TELE 2.34°±5% V : WIDE 40.5°±5% TELE 1.48°±5%
	Support mode	4K 30 fps /1080P 30fps
Thermal imagery	Resolution ratio	640*512 pixel
	Space between pixels	12μm
	Type	Uncooled vanadium oxide
	Wavelength Range	8~14μm
	Thermal sensitivity(NETD)	≤50mk@25°C@F1.0
	Digital Zoom	9x digital zoom
	Field angle	19mm camera lens, FOV: 22.9°x18.4°
Measurement function (optional)		Central point, the highest temperature and lowest temperature display temperature function; Supports global temperature measurement

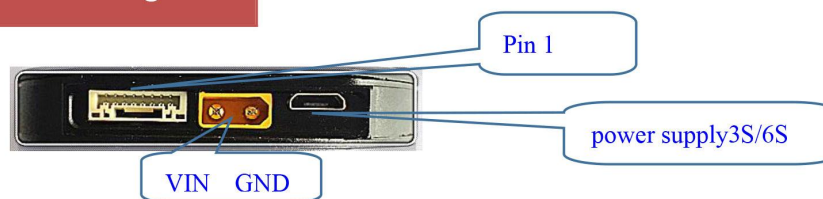
Dimensions	114mm×154mm×169mm
Operating Environment	-10°C to +45°C / 20% to 80% RH
Storage Conditions	-20°C to +60°C / 20% to 95% RH
Main application	UAV/Drone Photography
Weight	996±10g

Pseudo Color Mode

A variety of Pseudo color modes were displayed, and various modes could be switched through a command loop. As shown below:



Connection application diagram



No.	Type	Interface form	Interface Definition	Function
1	8PIN slot	Power Supply Interface	GND	GND
2		Power Supply Interface	5V	+5V Power the external receiver header
3		Communication Interface	RxD4	Serial port receiver
4		Communication Interface	TxD4	Serial port sender
5		Communication Interface	DB-	Network Interface
6		Communication Interface	DB+	Network Interface
7		Communication Interface	DA-	Network Interface
8		Communication Interface	DA+	Network Interface

* Due to product upgrade, appearance/size /Weight/ power consumption may be slightly changed, please contact sales for the latest data, please understand.

CONTACT CHINA MONEYPRO GROUP NOW:

EMAIL: SALES@MONEYPROUAV.COM

MOBILE: +86-18126437260 (WHAT'S UP) MS. AMY LUO