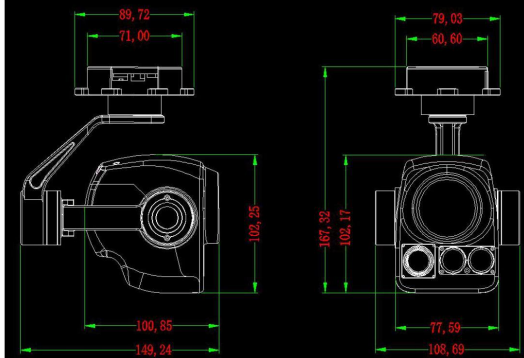
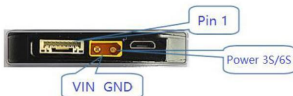


Feature

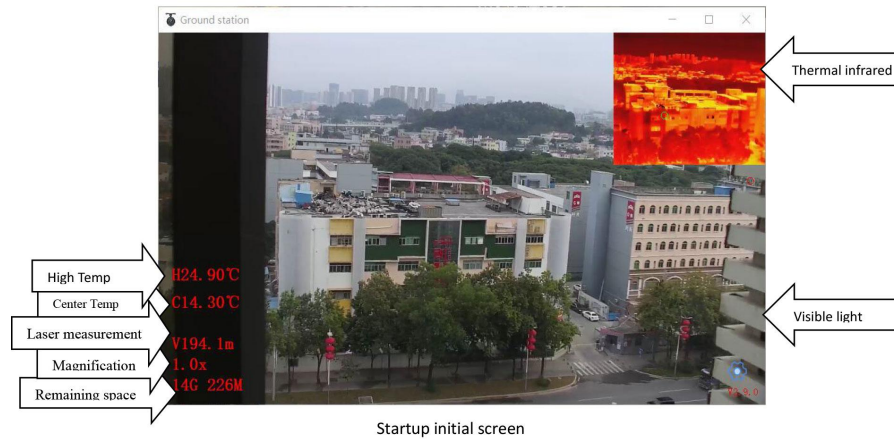
- 30x Optical Zoom + 640x512 Thermal
- Thermal pseudo switch
- Picture in picture mode
- 1080P IP output, two-way communicate
- 1500m laser distance measuring
- Ground software display & control
- Single TF card, two video recording
- 3-Axis lightweight gimbal

Struction



		
		<p>1 GND 2 5V OUT 3 RXD 4 TXD</p> <p>5 DB- 6 DB+ 7 DA- 8 DA+</p> <p>Note: Different product has different sequence of line, pls check and connect.</p>
Voltage		3S (DC12V) or 6S (DC26V) ;
Power Supply		Dynamic 12V 0.65A
Gimbal Feature	Pitch Angle	-90°~+135° Jitter±0.02°
	Yaw Angle	Stepless rotation for 360°Jitter±0.03
	Gimbal Mode	Support Lock/Follow Mode; One key return to center
	Control method	Speed self-adaption and controllable, external control of IP or serial port
Visible Light Camera Parameters	CMOS Size	1/2.8 inch 2MP wide dynamic CMOS SENSOR
	Optical Zoom	30x HD optical zoom lens, f=4.5±10%~135±10%mm
	Focusing Time	Real time fast focusing, focusing time < 1s
	Video Output	IP output, RTSP 1080P and 480P video stream, Local TF 1080P record
	Field Angle (FOV)	D : WIDE 67.8°±5% TELE 2.77°±5% H : WIDE 59.8°±5% TELE 2.34°±5% V : WIDE 40.5°±5% TELE 1.48°±5%
Laser Range Finder	Support mode	1080P 30fps
	Laser wave	905nm eye safety for human
	Detect range	5-1500 meter
	Accuracy / Resolution	1m/ 0.1m
Infrared Light Camera	Resolution	640x512 pixels
	Pix Spacing	12μm
	Type	Uncooled infrared microbolometer camera
	Wavelength	8~14μm
	Thermal Sensitivity (NETD)	≤50mk@F1.0
	Contrast ratio, Pseudo color	Adjustable, multiple pseudo color modes switch
	Field Angle	13mm Lens; Angle: 32.9°x26.6°
	Measurement (Optional)	Display center point, highest and lowest temperature. Support all area measurement
Device Size		L109mm*W150mm*H168mm
Work Condition		-10℃ to +55℃ / 20% to 80% RH
Storage Condition		-30℃ to +60℃ / 20% to 95% RH
Application		UAV aerial photography
Weight		780g

Windows Ground Station Startup Screen



PIP mode switch

The device supports display 5 modes of picture in picture:

1. Single visible light mode;
2. Visible light in big size + Thermal imaging rared in small size (Default mode);
3. Single thermal imaging mode;
4. Thermal imaging in big size + visible light in small size;
5. Visible light (left) + thermal infrared (right) split screen display with same size.



Visible light



Visible light +Thermal infrared



Thermal infrared



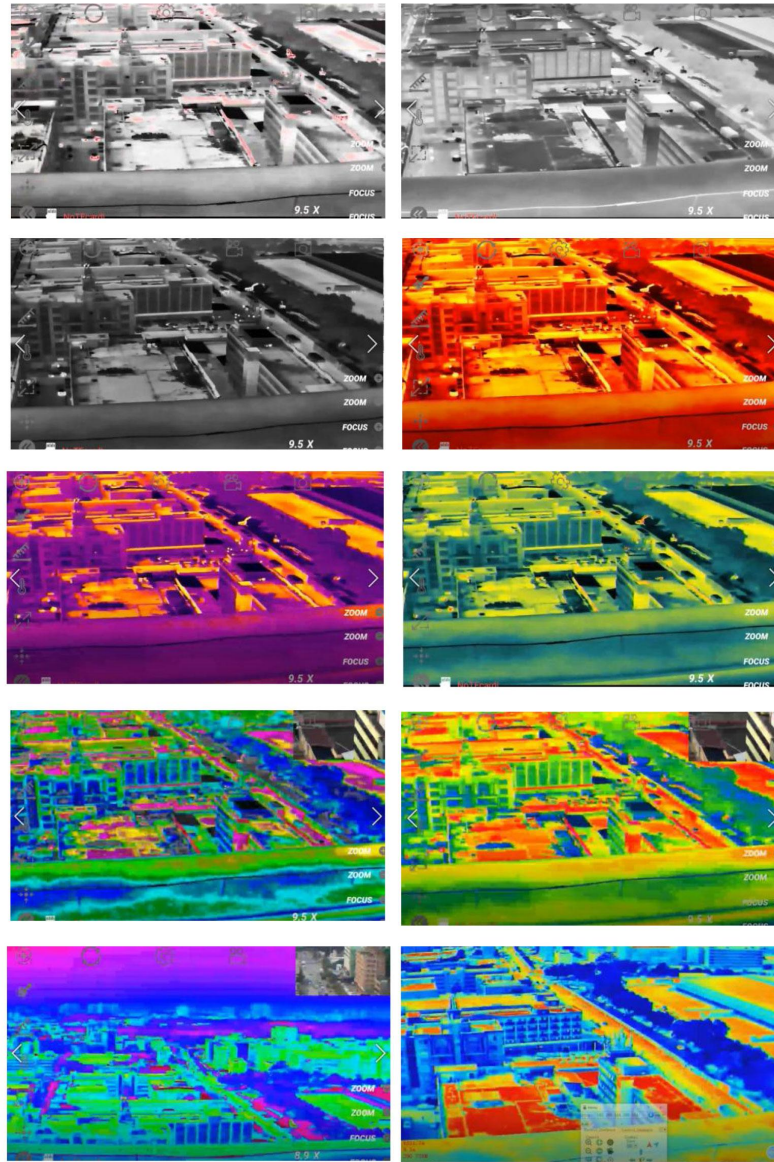
Thermal infrared + Visible light



Split screen display (Left and right)

Pseudocolor Mode Switch

Multiple pseudo color mode support color switching (different products will vary slightly). Mode display as follow:



CONTACT CHINA MONEYPRO GROUP NOW:

EMAIL: SALES@MONEYPROUAV.COM

MOBILE: +86-18126437260 (WHAT'S UP) MS. AMY LUO