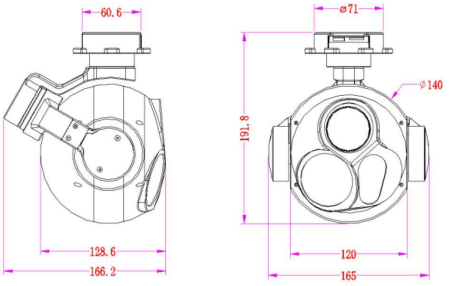



## Features

- 30x optical zoom+640\*512 thermal
- Temperature measurement, 35mm lens
- Multi picture in picture mode
- IP output, two-way communication
- 4km LRF, Video overlay
- Single TF card, dual synchronous video
- 3 axis stabilized gimbal, 1530 ± 20g.

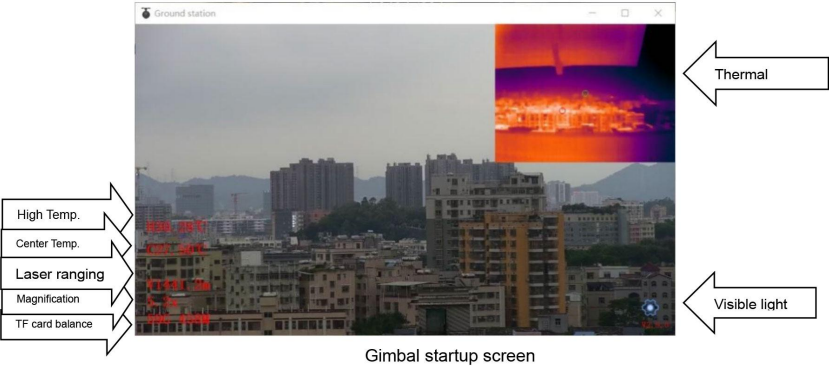
## System composition



		
		<b>1 GND 2 5V OUT 3 RXD 4 TXD</b> <b>5 DB- 6 DB+ 7 DA- 8 DA+</b> <b>The sequence of different product lines is different. Please confirm before connecting.</b>
<b>Voltage</b>		3S (DC12V) or 6S
<b>Power Consumption</b>		TBD To be tested
<b>Gimbal</b>	<b>Pitch Angle</b>	-90~+135° Jitter ±0.02°
	<b>Yaw Angle</b>	360° Infinite rotation Jitter ±0.03°
	<b>Gimbal Mode</b>	Support gimbal Lock/Follow mode; One-click return to the initial position
	<b>Control method</b>	Speed self-adaption and controllable, external control of IP network or TTL serial
<b>Visible Light Camera parameters</b>	<b>CMOS Size</b>	1/2.8inch 2MP wide dynamic range CMOS SENSOR
	<b>Optical Zoom</b>	30x Optical Zoom, f=4.5±10%~135±10%mm
	<b>Focusing Time</b>	Real time fast focusing, focusing time < 1s
	<b>Video Output</b>	IP output RTSP 1080P and 480P video stream, Local TF 1080P record
	<b>Field Angle (FOV)</b>	D : WIDE 67.8°±5% TELE 2.77°±5% H : WIDE 59.8°±5% TELE 2.34°±5% V : WIDE 40.5°±5% TELE 1.48°±5%
	<b>Support mode</b>	1080P 30fps
<b>Laser Range Finder</b>	<b>Laser wave</b>	1535nm safety for eyes
	<b>Detect range</b>	20~4000m (Objects less than 20m can not be irradiated)
	<b>Accuracy / Resolution</b>	Accuracy ≤± 2m; Ranging resolution ≤ 20m
<b>Thermal imaging</b>	<b>Resolution</b>	640*512 pixel
	<b>Pixel spacing</b>	12μm
	<b>Type</b>	Uncooled infrared microbolometer camera
	<b>Wavelength range</b>	8~14μm
	<b>Thermal sensitivity (NETD)</b>	≤50mk@F1.0
	<b>Contrast ratio, Pseudo color</b>	Adjustable, multiple pseudo color modes switch
	<b>Field Angle</b>	35mm Lens, Angle: 12.52°x10.03°
	<b>Measurement (Optional)</b>	Center point, highest temperature, lowest temperature, all area temperature display
<b>Device Size</b>		160mm×162mm×192mm
<b>Work Condition</b>		-20℃ to +50℃ / 20% to 80% RH
<b>Storage Condition</b>		-30℃ to +60℃ / 20% to 95% RH

Application	UAV aerial photography
Weight	1530±20g

### Windows Ground station startup screen



### PIP MODE Switching

Supports 5 picture in picture modes:

1. Single visible light mode;
2. Visible light large image + thermal imaging small image mode (default mode);
3. Single thermal imaging mode;
4. Thermal imaging large image + visible light small image mode;
5. Visible light left+ thermal imaging right split screen mode



Visible light



Visible light +Thermal infrared



Thermal infrared



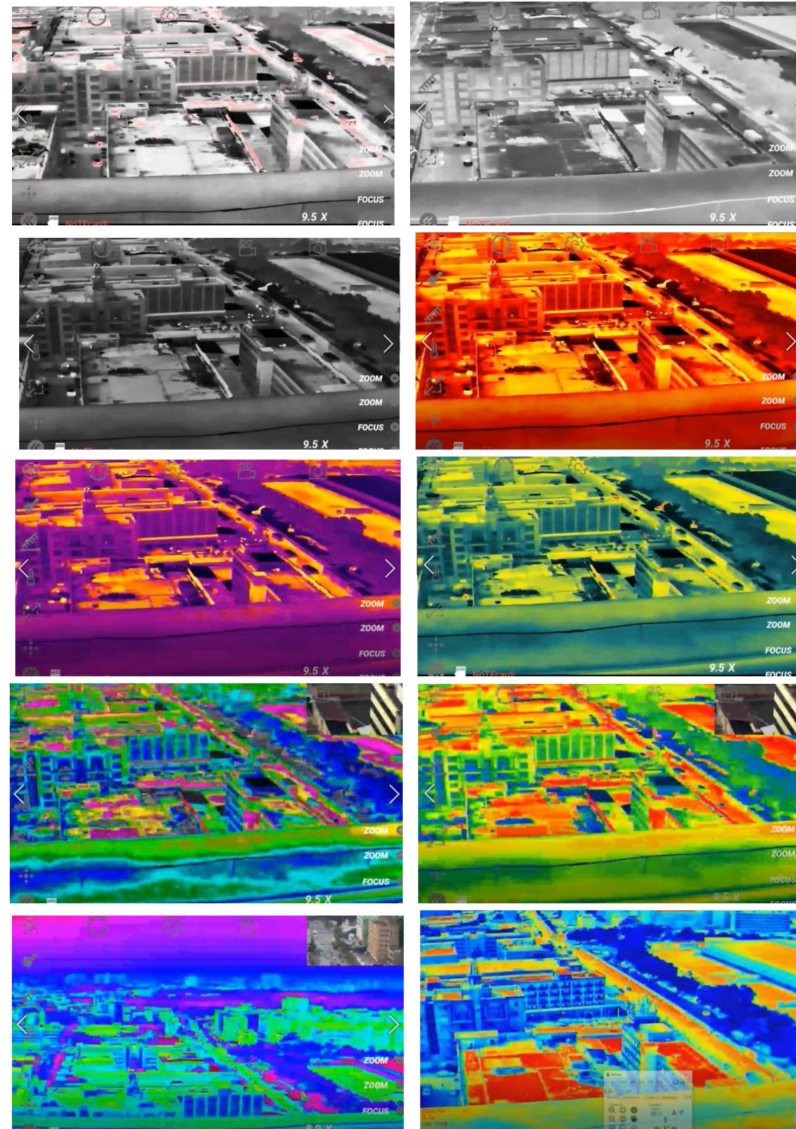
Thermal infrared + Visible light



Split screen display(left and right)

## Pseudo color mode switching

A variety of pseudo color modes are displayed, and various modes can be cyclically switched through commands. As shown in the figure below:



---

**CONTACT CHINA MONEYPRO GROUP NOW:**

**EMAIL: SALES@MONEYPROUAV.COM**

**MOBILE: +86-18126437260 (WHAT'S UP) MS. AMY LUO**