

Functional characteristics

- 30X visible light, 4.7-135mm
- 3X zoom thermal imaging, 13-40mm
- A variety of thermal imaging pseudo-color modes
- 3-axis stabilization gimbal
- Network and UART Control
- Menu adjustment Parameters
- Single TF card double record, network operation TF card

Whole structure

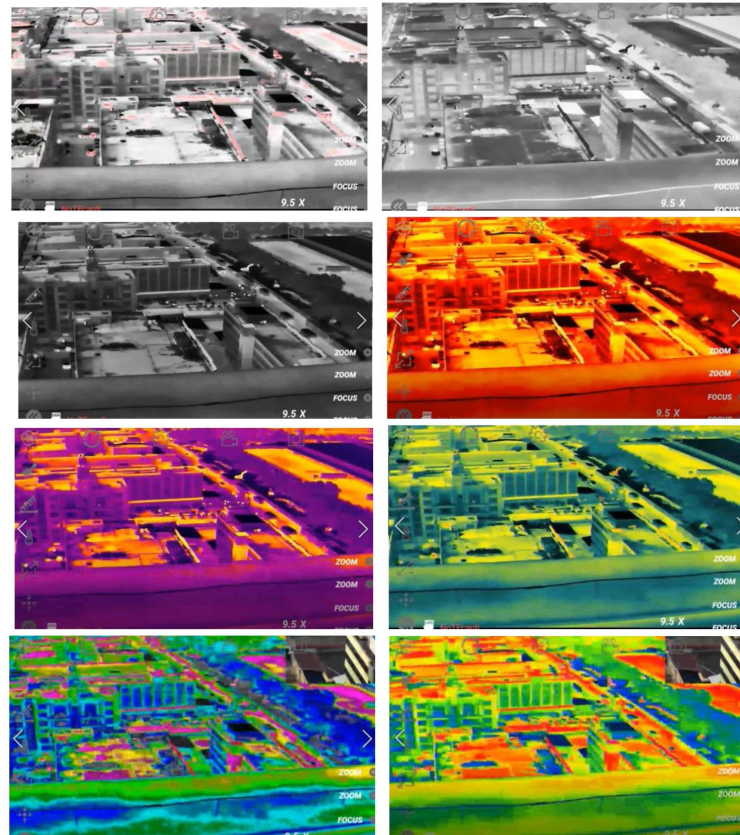


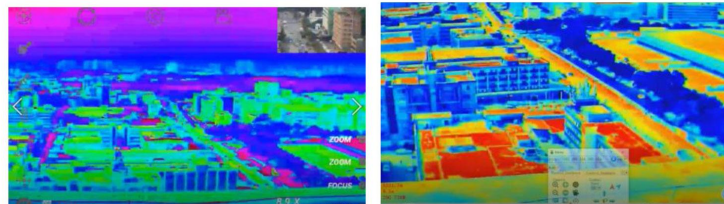


Voltage		3S / 6S
power		Dynamic 7.5W
operating characteristic	Roll Angle action range	-45~+45°
	Pitch action range	-135~+60°
	Yaw angle action range	360°Stepless Rotation
	The amount of angular jitter in pitch and roll direction	±0.02°
	The amount of horizontal Angle jitter	±0.03°
	One-key return function	One-click automatic quick return to the initial position
	The speed of the gimbal control is adjustable	When the gimbal rotates, it automatically adapts the speed based on the current speed mode and the multiple of visible light camera.
	Control mode	Support network IP control and serial port control (optional SBUS and PWM control)
White light camera parameters	CMOS Size	1/2.8inch 2 megapixel CMOS SENSOR
	Optical zoom	30x HD optical zoom lens, , f=4.5±10%~135±10%mm
	focusing time	Real-time fast focusing function, focusing time <1S
	Video output	IP network HPRTSP output 1080P,Video stream local TF storage
	Field angle (FOV)	D : WIDE 67.8°±5% TELE 2.77°±5% H : WIDE 59.8°±5% TELE 2.34°±5% V : WIDE 40.5°±5% TELE 1.48°±5%
	Support mode	1080P 30fps
Thermal imagery	Resolution ratio	Output 640*512 pixel(The detector is 800*600 pixel)
	Space between pixels	12μm
	Type	Unrefrigerated vanadium oxide detector

	Wavelength Range	8~14μm
	Thermal sensitivity(NETD)	≤50mk@F1.0
	field angle	40mm zoom lens, Angle: 33°26'—10°8.4'
	热成像变焦镜头	3x optical thermal imaging,13mm—40mm
Dimensions		H202mm× W142mm× L179mm
Operating Environment		-10℃ to +45℃ / 20% to 80% RH
Storage Conditions		-20℃ to +60℃ / 20% to 95% RH
Main application		Drone aerial photography
Weight		1670±10g
Pseudo color switch		

A variety of Pseudo color modes were displayed, and various modes could be switched through a command loop. As shown below:





Picture in picture switch network output

Supports 5 picture-in-picture modes: Visible big image + thermal small image mode (default mode); Single thermal imaging mode; Thermal imaging big image + visible light small image mode; Visible light + thermal imaging left and right split screen mode;



Zoom Visible light



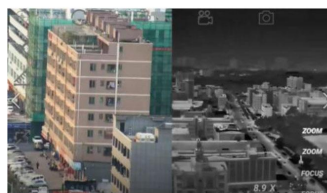
Visible light + Thermal infrared



Thermal infrared

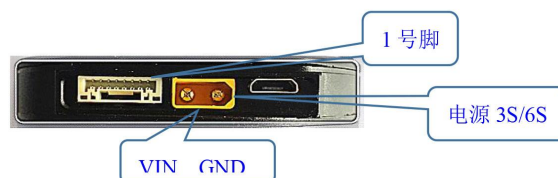


Thermal infrared + Visible light



Visible light + Thermal infrared

Connection application diagram



No.	Type	Interface form	Interface Definition	Function
1	8PIN slot	Power Supply Interface	GND	GND
2		Power Supply Interface	5V	+5V output
3		Communication Interface	RxD4	Serial port receiving
4		Communication Interface	TXD4	Serial port sending
5		Communication Interface	DB-	Network interface
6		Communication Interface	DB+	Network interface
7		Communication Interface	DA-	Network interface
8		Communication Interface	DA+	Network interface

*** Due to product upgrade, appearance/size /weight/ power consumption may be slightly changed, please contact sales for the latest data, please understand.**

CONTACT CHINA MONEYPRO GROUP NOW:

EMAIL: SALES@MONEYPROUAV.COM

MOBILE: +86-18126437260 (WHAT'S UP) MS. AMY LUO