

Feature

- 1080P Day Light+ 640x512 Thermal
- 9x Digital Zoom
- Picture in picture mode
- IP and HDMI dual output
- 1100m laser distance measuring
- Ground software display and control
- Single TF card, two video recording
- 3-Axis small gimbal. Weight 255g.

Struction

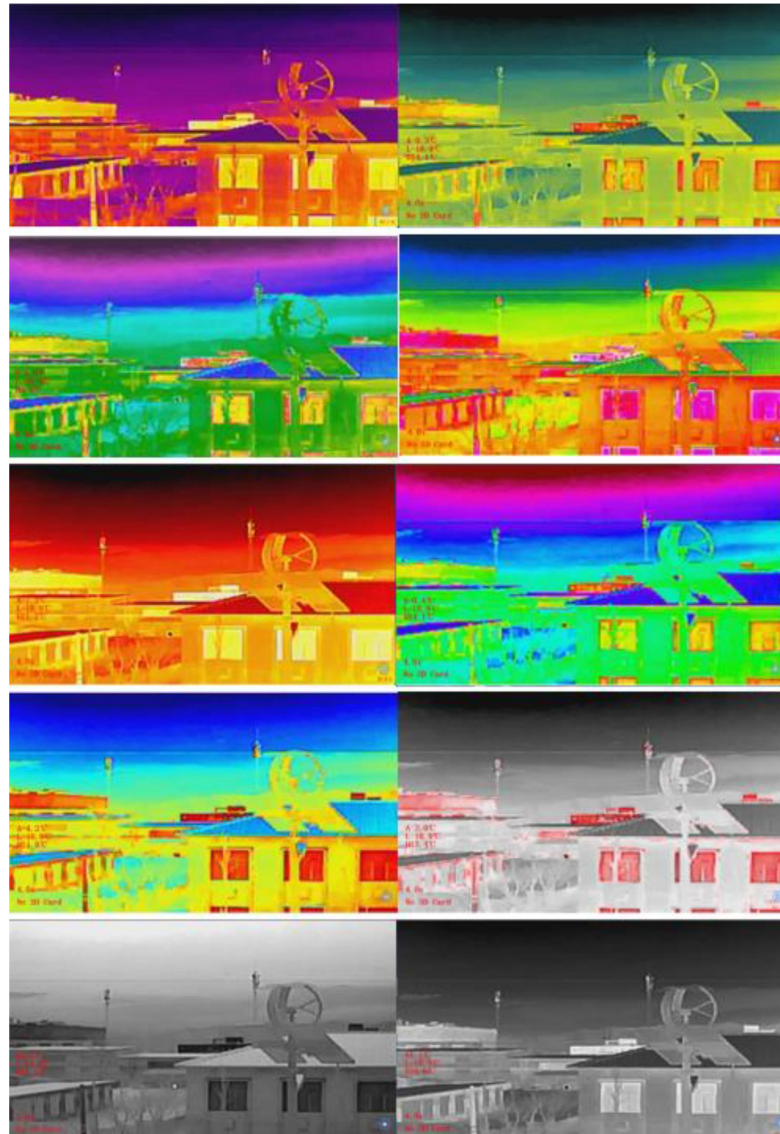




Voltage		3S (DC12V) or 6S (DC26V) ;
Power Supply		Static 7W
Gimbal Feature	Roll Angle	-50°~+50°
	Pitch Angle	-45°~+100°
	Yaw Angle	-150° ~+150°
	Angle jitter in pitch and roll	±0.02°
	Horizontal angle jitter	±0.03°
	Gimbal Mode	Support gimbal Lock/Follow mode; One key return to center
	Adjustable control speed	When the gimbal rotates, speed adaptation is based on the current speed mode and visible light camera magnification.
	Control method	Speed self-adaption and controllable, external control of IP net or TTL serial
Visible Light Camera Parameters	CMOS Size	2M pixels CMOS SENSOR
	Digital Zoom	9x Digital Zoom
	Compressed Storage Mode	H264, H265, video streaming local TF storage
	Field of View (FOV)	FOV: 60° x 43°
	HDMI Video	Micro-D HDMI 1080P 30fps
	Network Output Mode	1080P 30fps
Laser Range Finder	Laser wave	905nm (class 1 laser)
	Detect range	5-1100m
	Accuracy / Resolution	Within 400m, ≤ ± 1m; Above 400, ≤ ± 0.4m%
Infrared Light Camera	Resolution	640x512
	Pix Spacing	12μm
	Type	Uncooled infrared microbolometer camera
	Wavelength	8~14μm
	Thermal Sensitivity (NETD)	≤50mk@F1.0@25℃
	Field Angle	9.1mm Lens; Angle: 34.4°x25.8°
	Measurement (Optional)	Center point, highest temperature, lowest temperature, temperature display
Device Size		81.8mm×76mm×112mm
Work Condition		-10℃ to +45℃ / 20% to 80% RH
Storage Condition		-20℃ to +60℃ / 20% to 95% RH
Application		UAV aerial photography
Weight		255±10g

Pseudocolor Mode Switch

Multiple pseudo color modes are displayed, and various modes can be cycled through commands.
As shown in the following figure:



PIP mode switch

The device supports 4 display modes of picture in picture:

1. Single visible light mode;
2. Visible light (large picture) + thermal infrared (small picture) (default mode);
3. Single thermal infrared;
4. Thermal infrared (large picture) + visible light (small picture);



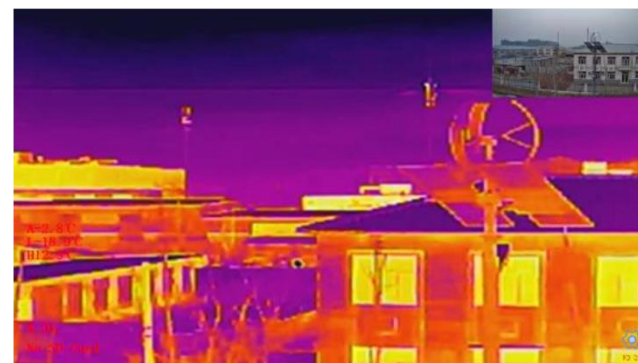
Visible light



Visible light +Thermal infrared

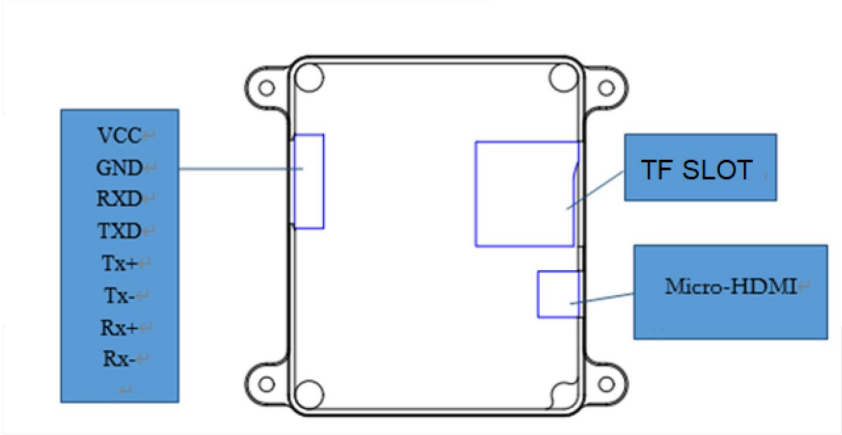


Thermal infrared



Thermal infrared + Visible light

Connection application diagram



Power supply	Power supply: 11V-26V (3S-6S lithium battery) If using the same battery to power the PTZ and aircraft, please ensure that the battery voltage meets the specifications of the PTZ and aircraft.
8PIN	VCC: Power input 11V-26V GND: Power ground RXD: Serial command reception, TTL level TXD: Serial command sending, TTL level TX+: Network IP signal TX -: Network IP signal RX+: Network IP signal RX -: Network IP signal
Network video output	Network IP high-definition video output RTSP, rtsp://192.168.144.108:554/stream=0
HDMI video output	Adopting D-type HDMI interface, output 1080P 30fps

*Due to product upgrades, there may be slight changes in appearance/size/weight/power consumption. Please contact sales for recent data. We apologize for any inconvenience caused.

CONTACT CHINA MONEYPRO GROUP NOW:

EMAIL: SALES@MONEYPROUAV.COM

MOBILE: +86-18126437260 (WHAT'S UP) MS. AMY LUO