

Feature

- 10x Optical Zoom + 640x512 Thermal
- Thermal pseudo switch
- Picture in picture mode
- 1080P IP output, two-way communicate
- 1500m laser distance measuring
- Ground software display and control
- Single TF card, two video recording
- 3-Axis FOC gimbal. Weight 630g.

Struction



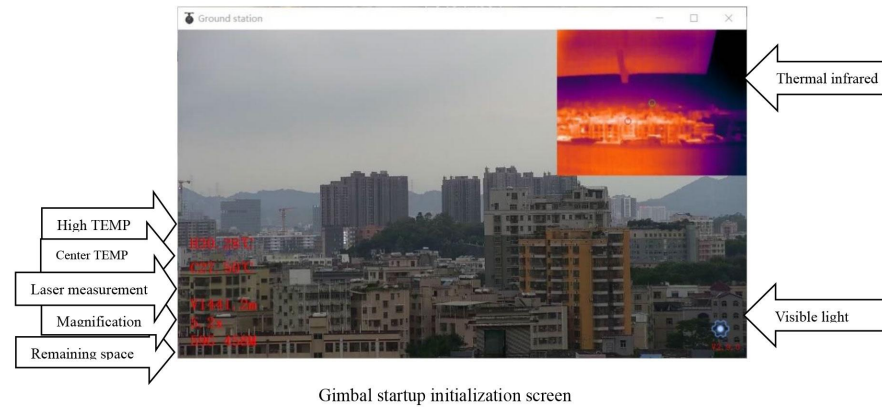


1 GND 2 5V OUT 3 RXD 4 TXD
5 DB- 6 DB+ 7 DA- 8 DA+

Note: Different product has different sequence of line, pls check and connect.

Voltage		3S (DC12V) or 6S (DC26V) ;
Power Supply		Static 7.5W, Dynamic 10W
Gimbal Feature	Pitch Angle	-90~+135° Jitter±0.02°
	Yaw Angle	Extreme rotate for 360° Jitter±0.03
	Gimbal Mode	Support gimbal Lock/Follow mode; One key return to center
	Control method	Speed self-adaption and controllable, external control of IP net or TTL serial
Visible Light Camera Parameters	CMOS Size	1/3 4M pixels CMOS SENSOR
	Optical Zoom	10x HD zoom lens, f=4.9±5%~49±5%mm
	Focusing Time	Real time fast focusing, focusing time < 1s
	Video Output	IP output RTSP 1080P and 480P video stream, Local TF 1080P record
	Field Angle (FOV)	D : WIDE 66.6° ± 5% TELE 7.2° ± 5% H : WIDE 53.2° ± 5% TELE 5.3° ± 5% V : WIDE 39.8° ± 5% TELE 4.2° ± 5%
Laser Range Finder	Support mode	1080P 30fps
	Laser wave	905nm safety for eyes
	Detect range	5-1500m
	Accuracy / Resolution	1m/ 0.1m
Infrared Light Camera	Resolution	640x512 pixels
	Pix Spacing	12μm
	Type	Uncooled infrared microbolometer camera
	Wavelength	8~14μm
	Thermal Sensitivity (NETD)	≤50mk@F1.0@25℃
	Contrast ratio, Pseudo color	Adjustable, multiple pseudo color modes switch
	Field Angle	13mm Lens; Angle: 32.9°x26.6°
	Measurement (Optional)	Center point, highest temperature, lowest temperature, temperature display
Device Size		125mm*135mm*H156mm
Work Condition		-10℃ to +45℃ / 20% to 80% RH
Storage Condition		-20℃ to +60℃ / 20% to 95% RH
Application		UAV aerial photography
Weight		630g

Startup Screen



PIP mode switch

The device supports 5 display modes of picture in picture:

1. Single visible light mode;
2. Visible light (large picture) + thermal infrared (small picture) (default mode);
3. Single thermal infrared;
4. Thermal infrared (large picture) + visible light (small picture);
5. Visible light (left) + thermal infrared (right) split screen display.



Visible light



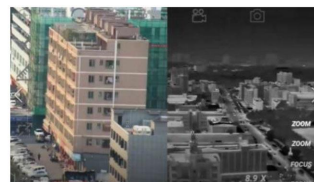
Visible light +Thermal infrared



Thermal infrared



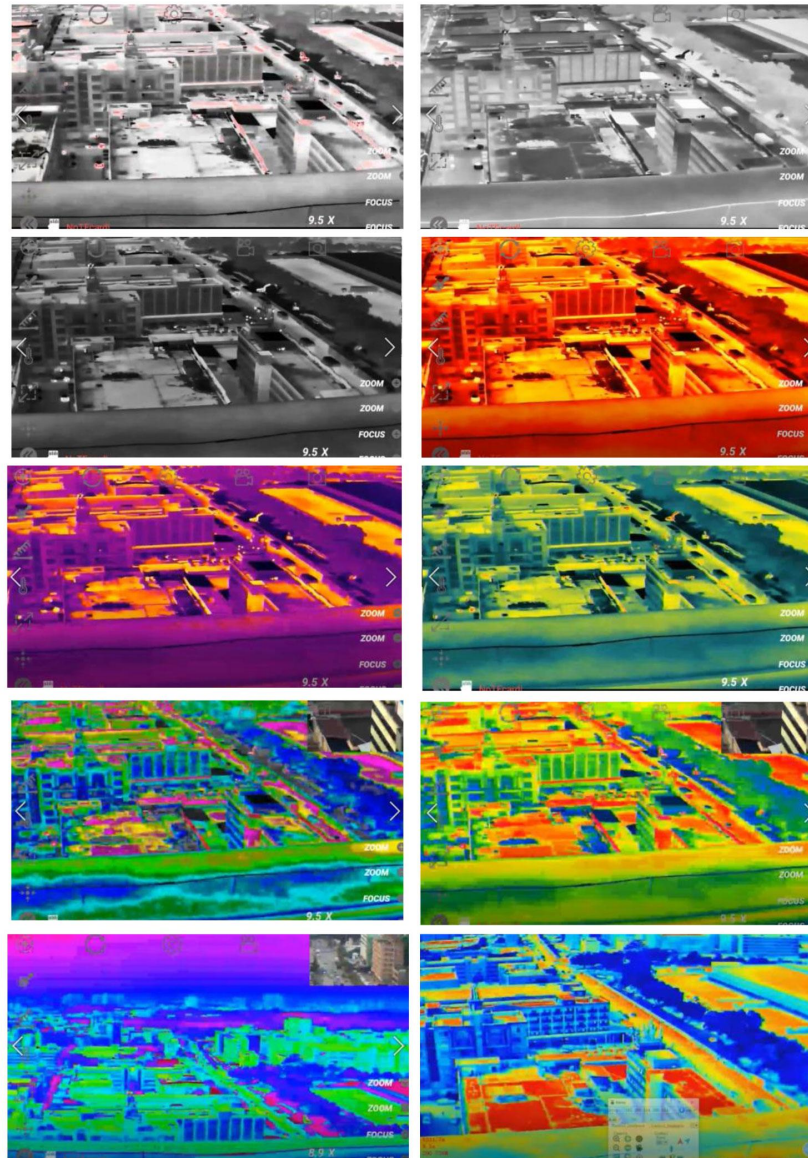
Thermal infrared + Visible light



Split screen display (Left and right)

Pseudocolor Mode Switch

Multiple pseudo color mode support color switching (different products will vary slightly). Mode display as follow:



CONTACT CHINA MONEYPRO GROUP NOW:

EMAIL: SALES@MONEYPROUAV.COM

MOBILE: +86-18126437260 (WHAT'S UP) MS. AMY LUO