

Feature

- 10x optical zoom, 9x digital zoom
- 19mm lens 640*512 thermal imaging
- Picture-in-picture modes
- Multiple pseudo-color switching
- TF card recording, IP reading& writing
- 170ms low latency RTSP output
- Ground station display & control
- Light weight gimbal, 430g
- 3-axis stabilizer, IP output
- UART and IP control

System structure





Voltage		3S or 6S
Power Supply		Dynamic 7.5W
Gimbal Feature	Roll Angle	-45~+45°
	Pitch Angle	-45~+120°
	Yaw Angle	-280° ~+280°
	Pitch and Roll Jitter Angle	±0.02°
	Horizontal Jitter Angle	±0.03°
	One-Click Restore	One-click restore to the initial position
	Adjustable Gimbal Speed	Low speed at big zoom status and fast speed control at small zoom status. Adaptively speed control based on zooming of daylight sensor.
Visible light Camera Para	CMOS Size	1/3 inch 4 mega effective pixels CMOS SENSOR
	Optical Zoom	10x HD optical zoom lens, f=4.9±10%~49±10%mm
	AF Time	Real time fast focusing, focusing time < 1s
	Video Output	IP HD RTSP output 1080P, video stream local TF storage
	Local Record	Local TF record, H.264/H265, 1080P video stream
	Field Angle (FOV)	D : WIDE 66.6° ±5% TELE 7.2° ±5% H : WIDE 53.2° ±5% TELE 5.3° ±5% V : WIDE 39.8° ±5% TELE 4.2° ±5%
	Support Mode	1080P 30fps
Thermal camera Para	Resolution	640*512 pixel
	Pixel spacing	12 μ m
	type	Uncooled vanadium oxide
	Wavelength range	8~14 μ m
	Thermal sensitivity (NETD)	≤65mk@30℃
	Video output	Network IP output
	Field angle	19mm lens, FOV: 22.9° x18.4°
	Measurement function (optional)	Center point, Lowest and Highest temperature display; Support global temperature measurement
Device Size		118.2mm×80.6mm×140mm
Work Condition		-10℃ to +45℃ / 20% to 80% RH

Storage Condition	-20°C to +60°C / 20% to 95% RH
Mainly usage	for UAV aerial photography
Weight (Not including dampers)	430±10g

Pseudo-color switching

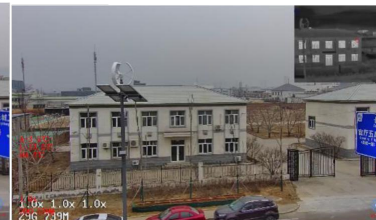
Multiple pseudo color modes are displayed, and various modes can be switched through command cycle. As shown in the figure below:

PIP (Picture in Picutre) Mode IP output

4 picture-in-picture modes are supported: single visible light mode; Large visible image+small thermal image mode (default mode); Single thermal imaging mode; Thermal imaging large image+visible light small image mode;



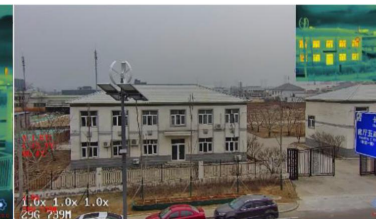
Visible light



Visible light +Thermal infrared



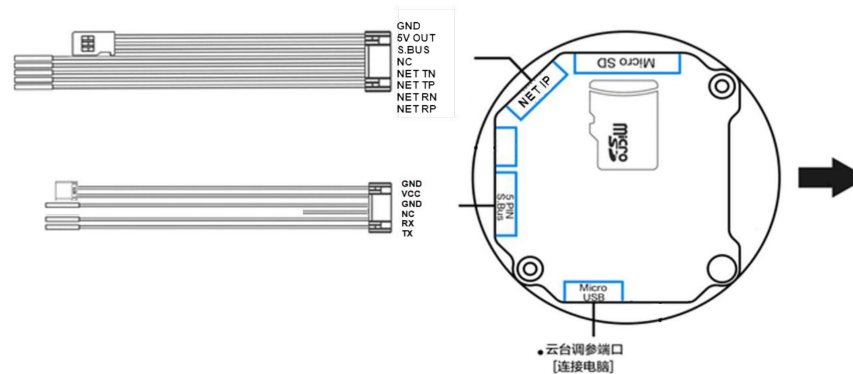
Thermal infrared



Thermal infrared + Visible light

Connecting

Electrical interface



No.	Name	Interface Type	Interface definition	Function
1	8PIN	Power connector	GND	GND
2		Power connector	5V	+5V output
3		communication interface	S. BUS	SBUS Control
4		communication interface	NC	
5		communication interface	Tx-	Network interface
6		communication interface	Tx+	Network interface
7		communication interface	Rx-	Network interface
8		communication interface	Rx+	Network interface

No.	Name	Interface Type	Interface definition	Function
1	6PIN	communication interface	GND	Power ground
2		communication interface	VCC	DC12V~26V (3S ~ 6S)
3		communication interface	GND	Signal ground
4		communication interface	NC	
5		communication interface	Rx	Serial port receiving
6		communication interface	Tx	Serial port sending
Model		Interface Type	Function	Remark
Micro-USB		USB interface	Gimbal tuning Interface	
TF card interface		Reserved port	Invalid on KIP10G series	TF card interface is on the sphere

***Due to the product upgrade, the appearance / size / weight / power consumption may change slightly. Please contact the sales department for the latest data. Thank you for understand.**

CONTACT CHINA MONEYPRO GROUP NOW:

EMAIL: SALES@MONEYPROUAV.COM

MOBILE: +86-18126437260 (WHAT'S UP) MS. AMY LUO