

System structure



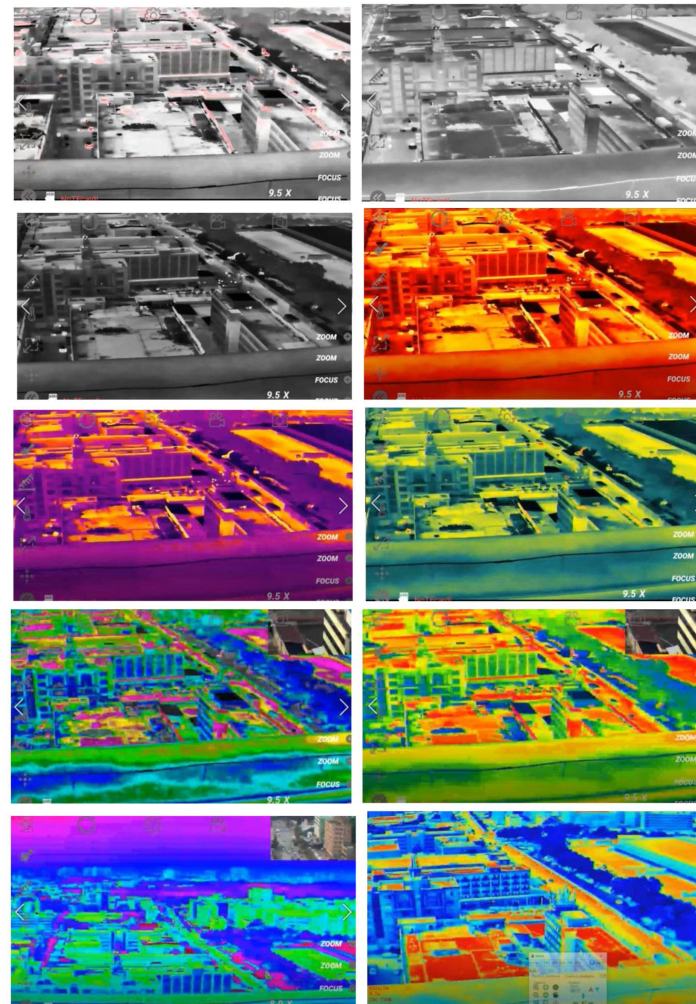


Voltage		3S or 6S
Power Supply		Dynamic 7.5W
Gimbal Feature	Roll Angle	-45~+45°
	Pitch Angle	-45~+120°
	Yaw Angle	-280° ~+280°
	Pitch and Roll Jitter Angle	± 0.02°
	Horizontal Jitter Angle	± 0.03°
	One-Click Restore	One-click restore to the initial position
	Adjustable Gimbal Speed	Low speed at big zoom status and fast speed control at small zoom status. Adaptively speed control based on zooming of daylight sensor.
Visible light Camera Para	CMOS Size	1/3 inch 4 mega effective pixels CMOS SENSOR
	Optical Zoom	10x HD optical zoom lens, f=4.9±10%~49±10%mm
	AF Time	Real time fast focusing, focusing time < 1s
	Video Output	IP HD RTSP output 1080P, video stream local TF storage
	Local Record	Local TF record, H.264/H265, 1080P video stream
	Field Angle (FOV)	D : WIDE 66.6° ±5% TELE 7.2° ±5% H : WIDE 53.2° ±5% TELE 5.3° ±5% V : WIDE 39.8° ±5% TELE 4.2° ±5%
	Support Mode	1080P 30fps
Thermal camera Para	Resolution	640*512 pixel
	Pixel spacing	12 μ m
	type	Uncooled vanadium oxide
	Wavelength range	8~14 μ m
	Thermal sensitivity (NETD)	≤65mk@30℃
	Video output	Network IP output
	Field angle	19mmlens, FOV: 22.9° x18.4°
	Measurement function (optional)	Center point, Lowest and Highest temperature display; Support global temperature measurement

Device Size	80mm×118mm×137mm
Work Condition	-10℃ to +45℃ / 20% to 80% RH
Storage Condition	-20℃ to +60℃ / 20% to 95% RH
Mainly usage	for UAV aerial photography
Weight (Not including dampers)	453±10g

Pseudo-color switching

Multiple pseudo color modes are displayed, and various modes can be switched through command cycle. As shown in the figure below:

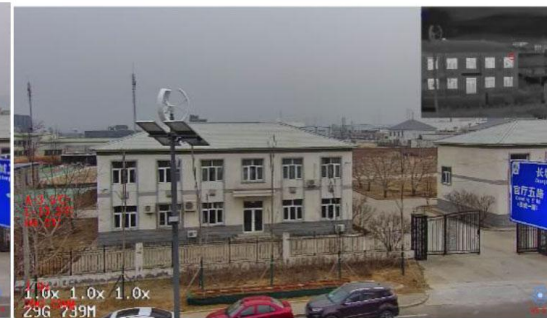


PIP (Picture in Picture) Mode IP output

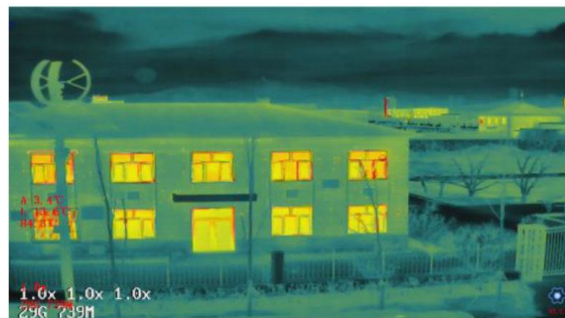
4 picture-in-picture modes are supported: single visible light mode; Large visible image+small thermal image mode (default mode); Single thermal imaging mode; Thermal imaging large image+visible light small image mode;



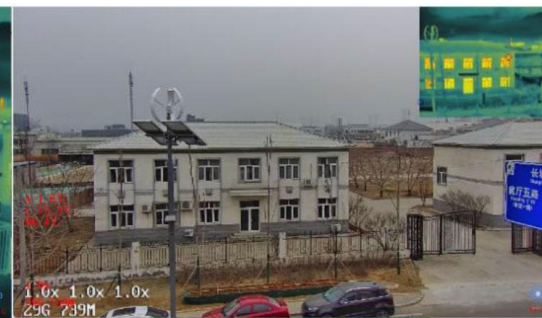
Visible light



Visible light +Thermal infrared



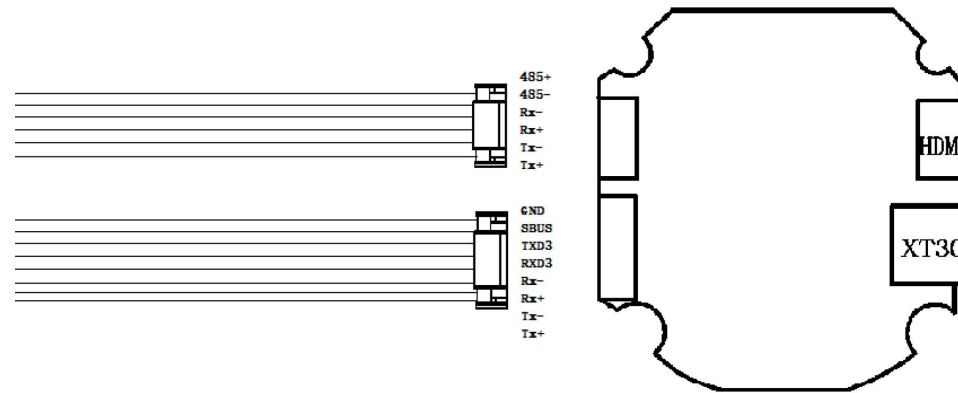
Thermal infrared



Thermal infrared + Visible light

Connecting

Electrical interface



No.	Name	Interface Type	Interface definition	Function
1	6PIN	communication interface	485+	485 Interface
2		communication interface	485-	485 Interface
3		communication interface	Rx-	Network interface
4		communication interface	Rx+	Network interface
5		communication interface	Tx-	Network interface
6		communication interface	Tx+	Network interface

No.	Name	Interface Type	Interface definition	Function
1	8PIN	communication interface	GND	GND
2		communication interface	SBUS	SBUS input
3		communication interface	TXD3	Serial port sending
4		communication interface	RXD3	Serial port receiving
5		communication interface	Rx-	Network interface
6		communication interface	Rx+	Network interface
7		communication interface	Tx-	Network interface

8		communication interface	Tx+	Network interface
---	--	-------------------------	------------	-------------------

Model	Interface Type	Function	Remark
Mini-HDMI	HDMI	Video output interface	
TF card interface	Reserved port	Upgrade and store data	TF card interface is on the sphere

***Due to the product upgrade, the appearance / size / weight / power consumption may change slightly. Please contact the sales department for the latest data. Thank you for understand.**

CONTACT CHINA MONEYPRO GROUP NOW:

EMAIL: SALES@MONEYPROUAV.COM

MOBILE: +86-18126437260 (WHAT'S UP) MS. AMY LUO