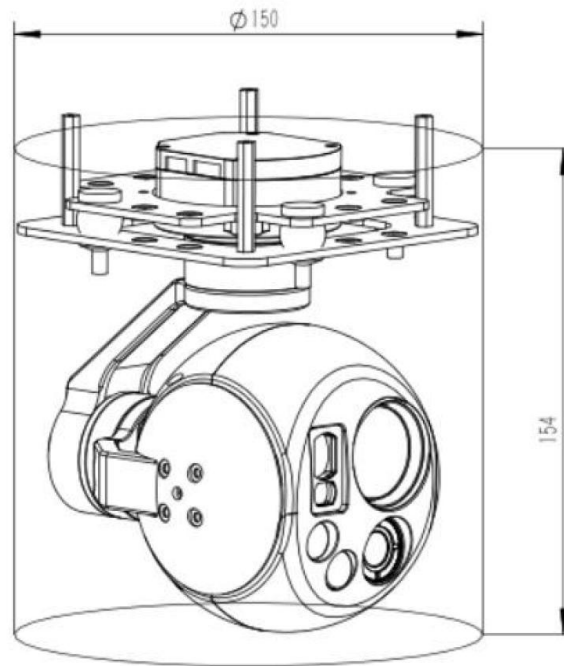


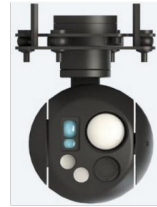
Function characters

- 10x optical zoom
- 640*512 thermal imaging
- 5-1500 laser rangefinder
- supplementary lights
- 9x digital zoom
- AI Target Detection and Tracking

Structure



Note①: The serial port refers to: 3.3V, LVTTTL UART”.

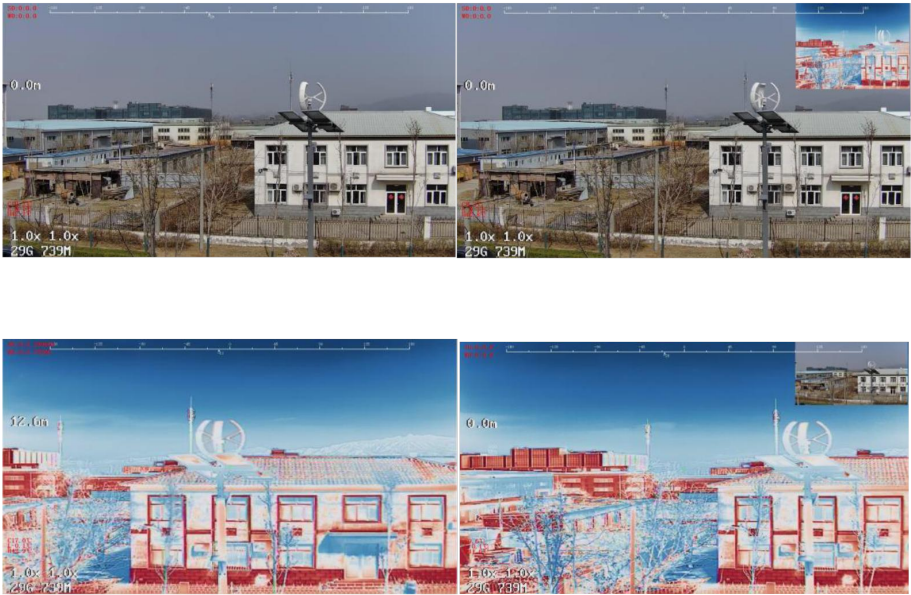


Voltage		DC12V-26.2V②
Power		Static 7.2W
Gimbal Parameter	Roll angle	-45° ~ +45°
	Pitch Angle	-30° ~ +100°
	Yaw Angle	-285° ~ +285°
	Angle jitter in pitch and roll direction	±0.02°
	Horizontal Angle jitter	±0.03°
	One-click return to the center function	Quick return to initial position with one click
	Adjustable Gimbal Speed	When the gimbal rotates, speed adaptation is based on the current speed mode and visible light camera magnification.
	Control Mode	UDP/UART/SBUS (OPTIONAL PWM)
Visible Light Camera	Sensor CMOS SIZE	1/3" CMOS SENSOR: 4 Mega Pixels
	Optical Zoom	10 x optical zoom+9x digital zoom; f=5.15±5%~47.38±5%mm
	Focus time	Real-time fast focusing function, focusing time <1S
	Video output	Ethernet (RTSP) @1080P/30FPS;
	Field Angle (FOV)	D : WIDE 69.5°±5% TELE 7.95°±5% H : WIDE 61.5°±5% TELE 7.00°±5% V : WIDE 35.0°±5% TELE 3.97°±5%
Thermal Imaging Sensor	Resolution	640x512
	Pix Spacing	12μm
	Type	Uncooled Vanadium Oxide Detector
	Wavelength	8~14μm
	Thermal Sensitivity (NETD)	≤50mk@F1.0@25℃
	Field of Angle	13mm lens. FOV: 33× 26
	Temperature Measurement	Global temperature measurement, Optional full-pixel temperature saving function
Laser Rangfinder	Wavelength	905nm ±5nm (Class I)
	Detect range	5—1500 meters
	Laser safety class	Class I
	Accuracy	≤1m
Target recogniti on and tracking	Min tracking target size	16×16 pixels
	Max tracking target size	256×256 pixels
	Target Memory Time	2 seconds
	Tracking speed	50 Pixel/Frame max

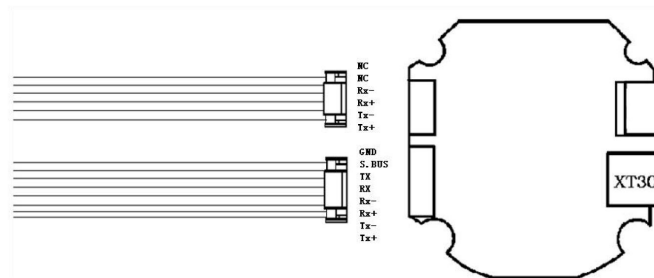
	Simultaneous detection qty	100 targets max
	Recognized categories	Human and Vehicle
	Min detection target size	32×32 pixels
	Device size	150mm×154mm
	Work environment	-10℃ to +60℃ / 20% to 80% RH
	Storage environment	-20℃ to +80℃ / 20% to 95% RH
	Weight	650±20g

Note②: The voltage is DC12V~26.2V. It should be noted that the instantaneous voltage of the power supply cannot exceed 27V.

Picture-in-picture Modes



Connection Application Diagram



Item	Model	Interfaces	Definition	Function
1	8PIN Socket	Signal	GND	GND
2		Signal	S.BUS	S. BUS Input
3		Signal	TX	UART sending
4		Signal	RX	UART receiving
5		Signal	Rx-	Network Transmission
6		Signal	Rx+	Network Transmission
7		Signal	Tx-	Network Transmission
8		Signal	Tx+	Network Transmission

Item	Model	Interfaces	Definition	Function
1	6PIN Socket	Signal	NC	Reserved
2		Signal	NC	Reserved
3		Signal	Rx-	Network
4		Signal	Rx+	Network
5		Signal	Tx-	Network
6		Signal	Tx+	Network

Model	Interfaces	Function	Remarks
Memory Card	Micro-sd card	Upgrade and Store data	on the sphere

***Due to product upgrade, appearance/size/weight/power consumption may change slightly. Please contact sales for the latest data.**

CONTACT CHINA MONEYPRO GROUP NOW:

EMAIL: SALES@MONEYPROUAV.COM

MOBILE: +86-18126437260 (WHAT'S UP) MS. AMY LUO