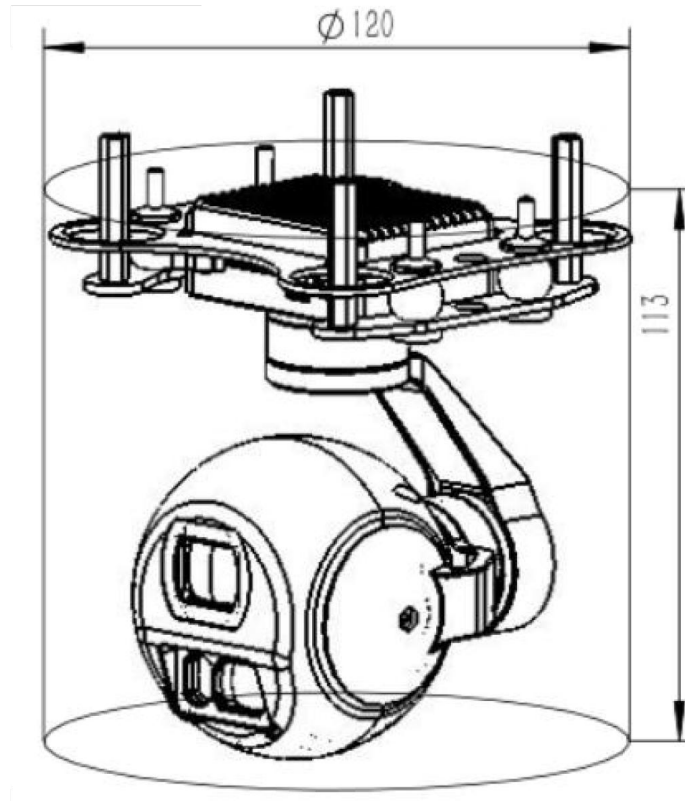


Functional Features

- hybrid zoom
- Quick Focus
- AI Target Detection and Tracking
- 1200m laser range finder
- High-precision FOC
- Integrated Ground Station Software

Device Structure



Annotation① : 45X hybrid zoom: 5X optical zoom * 9X digital zoom

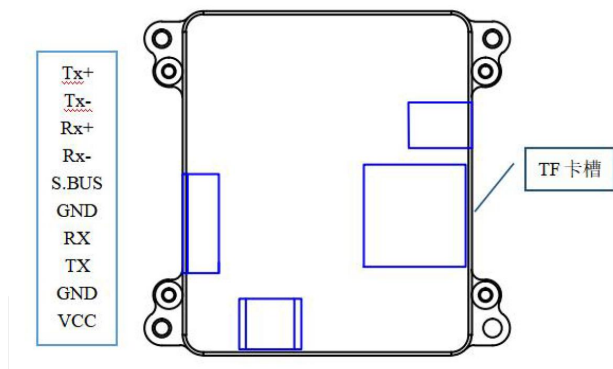
Annotation② : UART: 3.3V, LVTTL UART.



Voltage		DC 12V-26.2V ^③
Power Supply		Static 5W
Characteristics	Roll Angle Range	-45°~+45°
	Pitch Angle Range	-40°~+100°
	Course Angle Range	-145° ~+145°
	Pitch and Roll Angle Jitter	±0.02°
	Horizontal Angle Jitter	±0.03°
	One-click Return Function	Quick return to initial position with one click
	Adjustable PTZ Speed	The current speed mode based on the multiple zoom of camera
	Control Modes	IP and UART and S.BUS control (or PWM for Option)
Visible Light Camera	CMOS Size	1/3" CMOS SENSOR: 4 Mega Pixels
	Optical zoom	5x HD optical zoom lens, f=5±10%~25±10%mm
	Focusing Time	Real time fast focusing, focusing time <1S
	Video Format	RTSP 1080P and Local TF 1080P record
	Field Angle (FOV)	D : WIDE 61.1° TELE 12.41° H : WIDE 50.12° TELE 10.81° V : WIDE 38.07° TELE 8.13°
	Support Mode	1080P 30fps
LRF	Laser wave	905nm (class 1 laser)
	Detect range	5~1200m
	Accuracy / Resolution	±1m
Target recognition and tracking	Minimum tracking target size:	16×16 pixels
	Maximum tracking target size:	256×256 pixels
	Maximum occlusion time:	2 seconds
	Maximum speed supported:	50 pixels/frame
	Maximum number of recognitions:	100
	Recognized categories:	people and cars
	Minimum recognized size:	32×32 pixels
Size		120mm × 113mm
Operating Temperature		-10℃ to +45℃ / 20% to 80% RH
Storage Temperature		-20℃ to +60℃ / 20% to 95% RH
Application		UAV aerial photography

Annotation③: The input voltage should be DC12V~26.2V and the instantaneous voltage should be below 27V.

Interface Diagram:



Item	Model	Interfaces	Definition	Function
1	10 PIN Socket	Signal	Tx+	IP
2		Signal	Tx-	IP
3		Signal	Rx+	IP
4		Signal	Rx-	IP
5		Signal	S. BUS	S. BUS Input
6		Signal GND	GND	GND
7		Signal	RX	UART Reception
8		Signal	TX	UART Transmission
9		Power GND	GND	GND
10		Power Output	VCC	DC 12V-26.2V

*Due to product upgrade, appearance/size/weight/power consumption may change slightly. Please contact sales for the latest data.

CONTACT CHINA MONEYPRO GROUP NOW:

EMAIL: SALES@MONEYPROUAV.COM

MOBILE: +86-18126437260 (WHAT'S UP) MS. AMY LUO