

S1 Avionics System

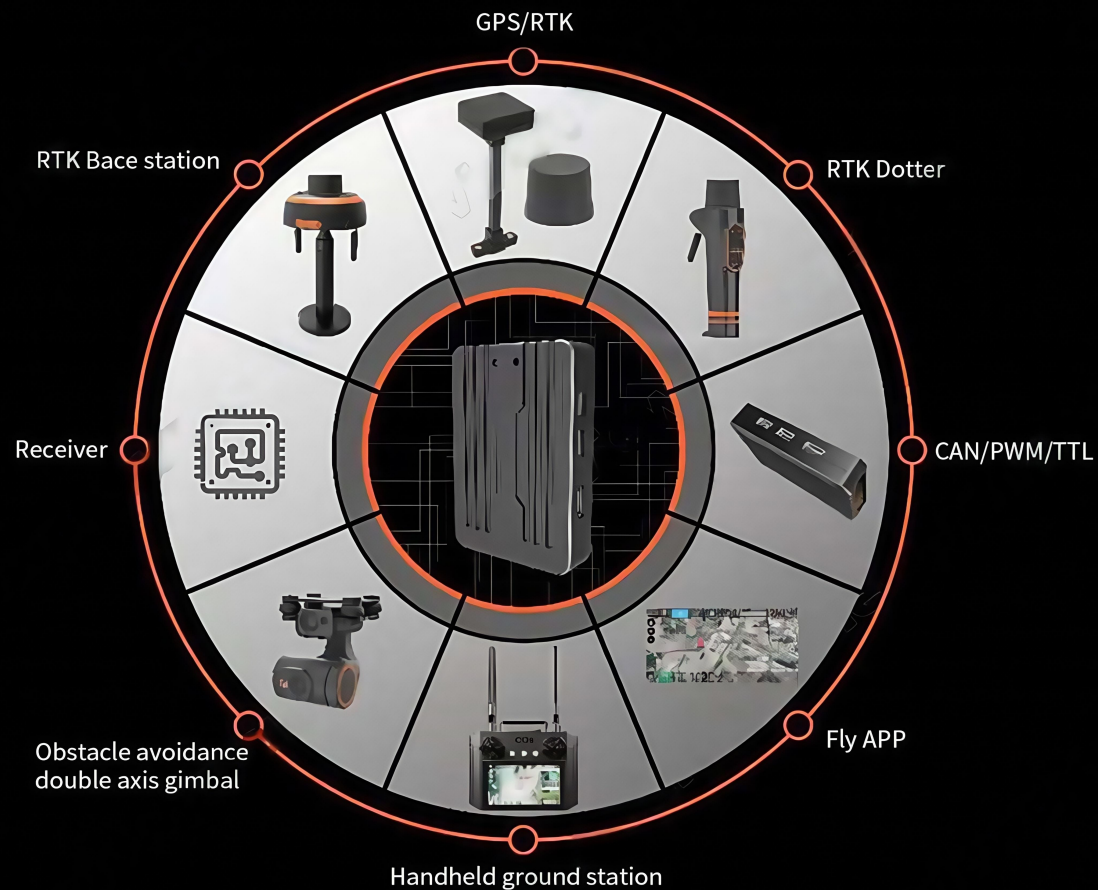
Highly integrated • Multi in one • Extensible



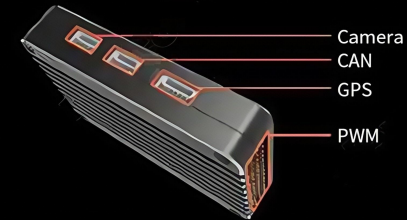
S1 Avionics System

Instruction:

S1 avionics system provides a comprehensive UAV flight control solution. The complete configuration and scalability make the UAV have rich functions and strong adaptability. From the ground to the air, We have mature technical support. With high integration and multi expansion, S1 avionics system can be more easily applied to professionals in different fields.



Interface Instructions:



Obstacle avoidance double axis gimbal

Size: 57.5 x 49 x 47.1mm

Specification: 1/2.7 SENSOR EFL-2.4mm

Angle: 100°

Resolution: 1080P 25fps

Weight: 51g

Mesure Range: 0.05-20m

Mesure accuracy: 0.05-2m: $\pm 2\text{cm}$ 2-20m: $\pm 2\%$

Mesure speed: 50Hz/100Hz

Laser resolution: 1cm

Light source wavelength: 750-830nm

Work voltage: 3.5-5.5V

Power: 60mA @5V

Work temperature: 10-60°C



RTK Base station

Size: 117x115x117mm

RTK positioning accuracy: 2cm+1 ppm

Battery capacity: 12000mAh

Wireless frequency: 915MHz

Suitable for PD3.0 fast charging protocol, Bluetooth, connect distance 5-20km



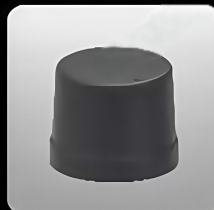
RTK Dotter

DC Input

RTK positioning accuracy

Battery capacity

Bluetooth, connect distance 5-20km



RTK

Size: 47.1*36.7mm

Baud rate: 115200 230400

Positioning accuracy: 2cm+1ppm

Highly Integrated / Wide Expand

S1 avionics system has multiple functions and built-in receiver, which can realize long-distance and stable data transmission and image transmission. S1 has built-in high-quality audio decoding, which can be connected with a loudspeaker with power amplifier to realize the functions of voice and audio playback.

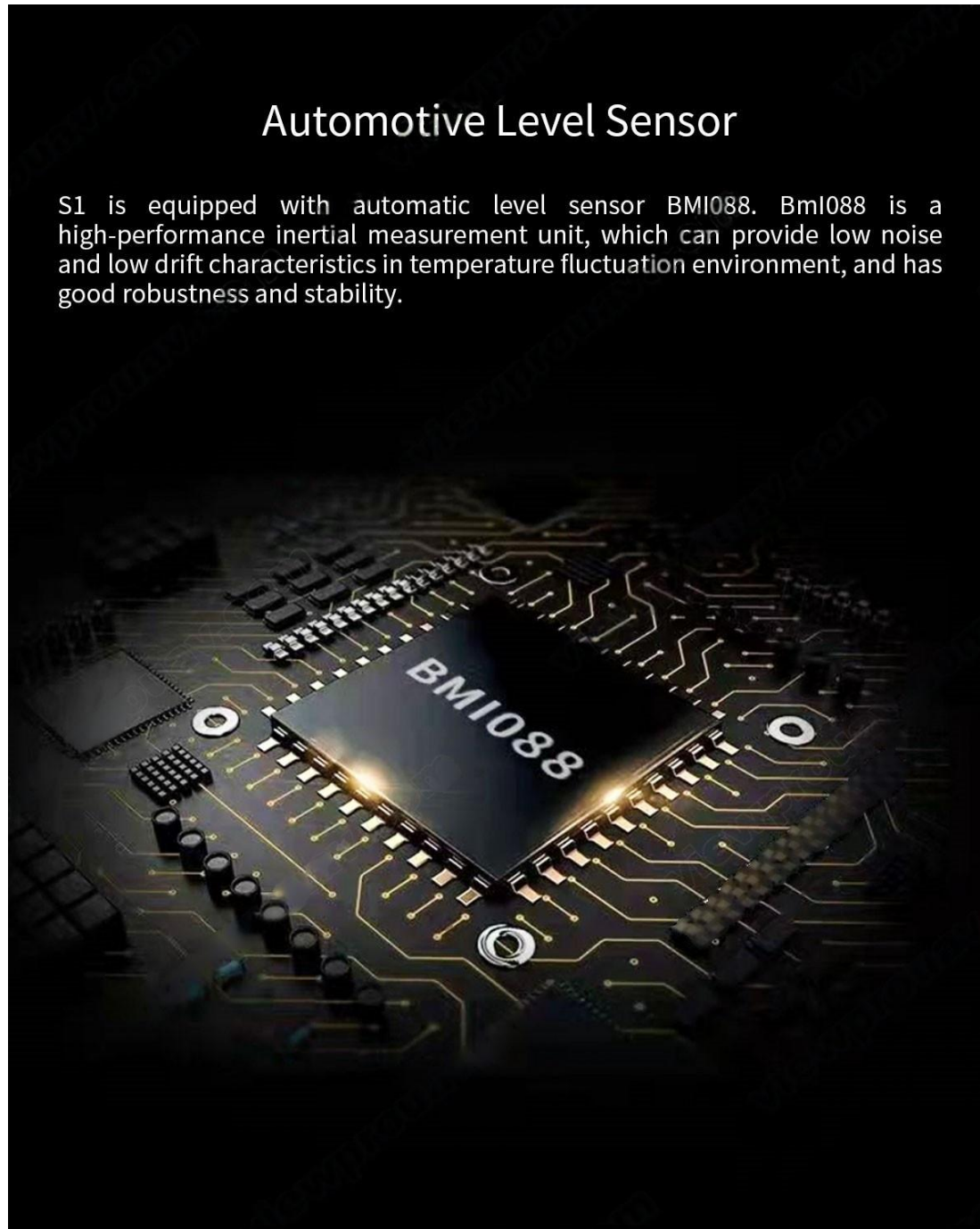
Rreceiver, Datalink, Imagelink

Audio decoding



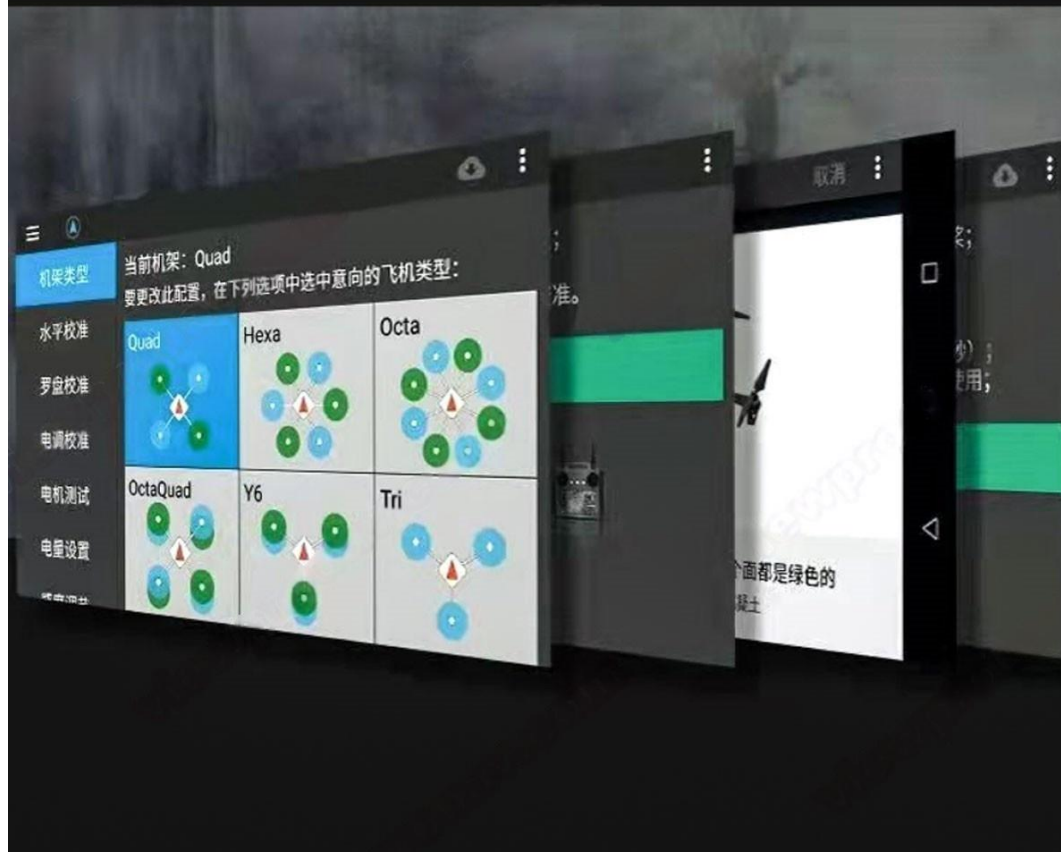
Automotive Level Sensor

S1 is equipped with automatic level sensor BMI088. Bmi088 is a high-performance inertial measurement unit, which can provide low noise and low drift characteristics in temperature fluctuation environment, and has good robustness and stability.



Easy to Tuning

Through ground station app, parameter adjustment is easy for the equipment installed with S1. Various parameter settings are clear at a glance, making the original complex parameter adjustment settings simple and easy.



Obstacle Avoidance Gimbal

The full package of S1 is equipped with dual axis brushless laser obstacle avoidance gimbal, 1080p FHD camera, adjustable gimbal to reduce jitter. Stable picture. High-precision laser obstacle avoidance sensor, measurement blind area as small as 5cm, measurement speed is up to 100Hz, measurement range is max 20m and measurement accuracy 2cm. It can effectively avoid obstacle avoidance failure caused by insufficient light or specular reflection.

1080P
FULLHD



Audio Output

S1 has an audio output interface, which can realize functions such as shouting and text-to-speech after connecting to a speaker with an amplifier



Multiple Interfaces

S1 has 12 channels of PWM, can, audio output and other interfaces. With its multiple interfaces, it has strong expansion ability and can be used on devices with different scenes, functions and requirements.



CONTACT CHINA MONEYPRO GROUP NOW:

EMAIL: SALES@MONEYPROUAV.COM

MOBILE: +86-18126437260 (WHAT'S UP) MS. AMY LUO