

MoneyproM412

— .





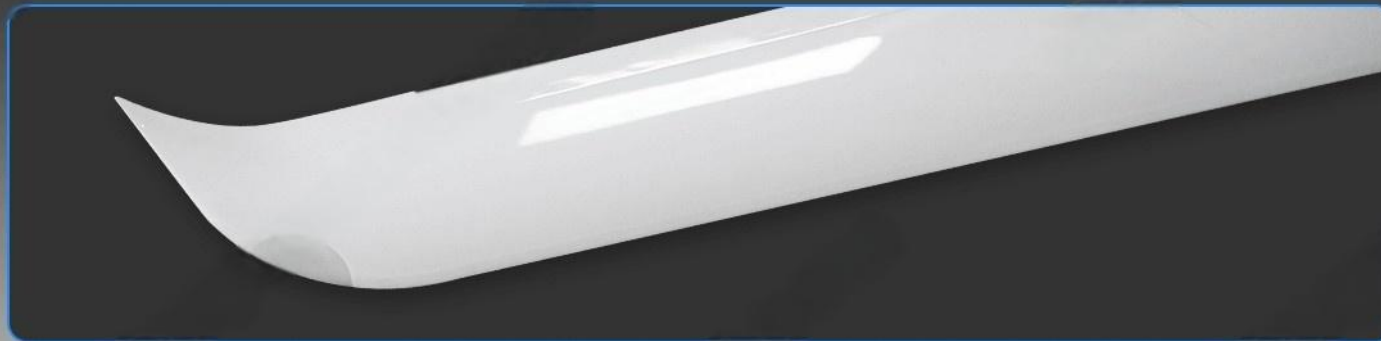
Slide rail Detachable Payload
Compartment Design, replace
the payload easily and quickly,
switch missions rapidly.



CAN communication GPS module, stronger anti-interference ability.

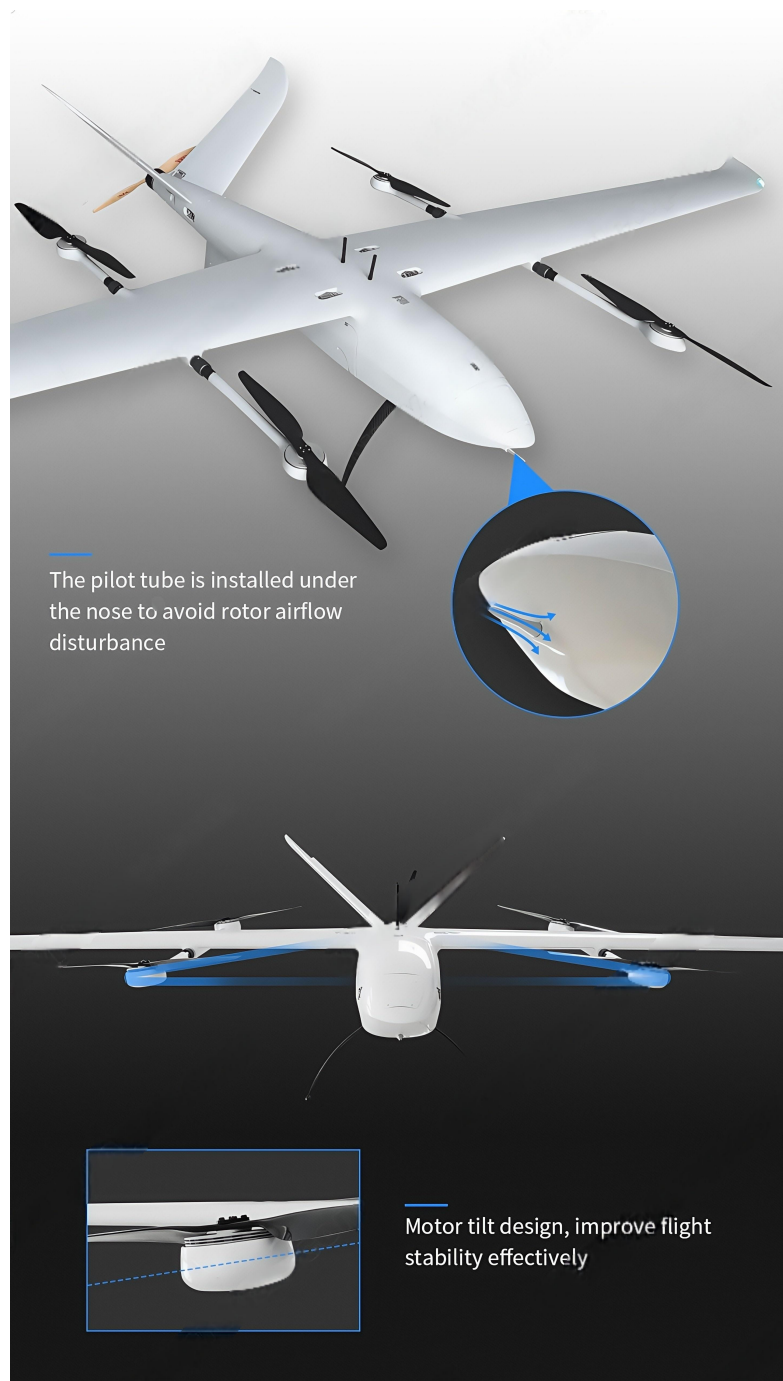


Navigation light design (red left, green right, white tail), suitable to applied in night patrol, surveillance with safer landing.



Carbon fiber + glass fiber + aviation composite, lighter and stronger.

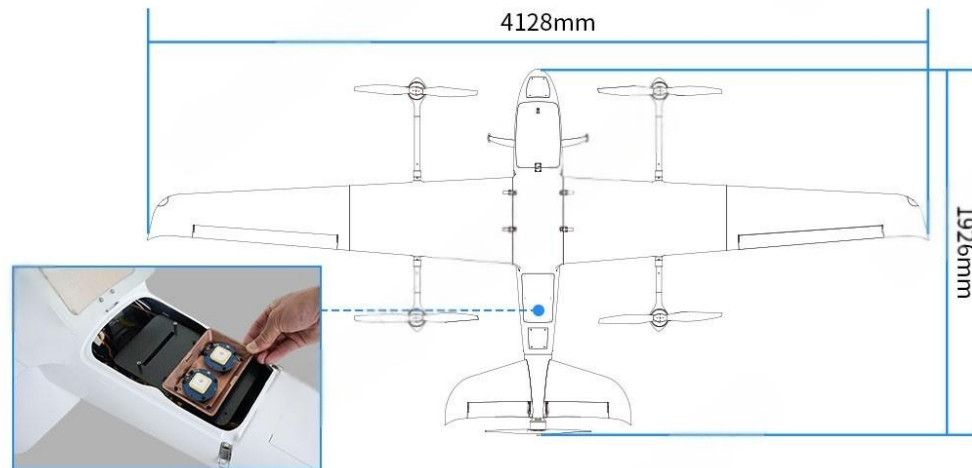




The pilot tube is installed under the nose to avoid rotor airflow disturbance

Motor tilt design, improve flight stability effectively

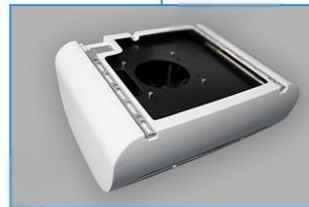
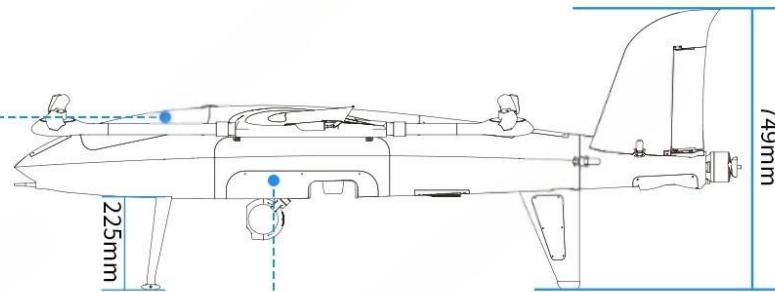
Dimensions



Device compartment:
34×15.5×17cm



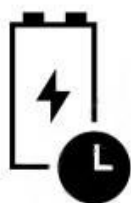
Battery compartment:
30.5×19.7×16cm



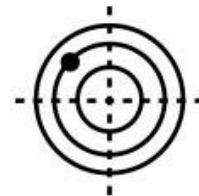
Payload compartment:
46*24*16cm



Wingspan: 4128mm



Flight time: 240min



Flight radius: 100KM



Maximum load: 10KG



Maximum speed: 110KM/H



Ceiling height: 4500M

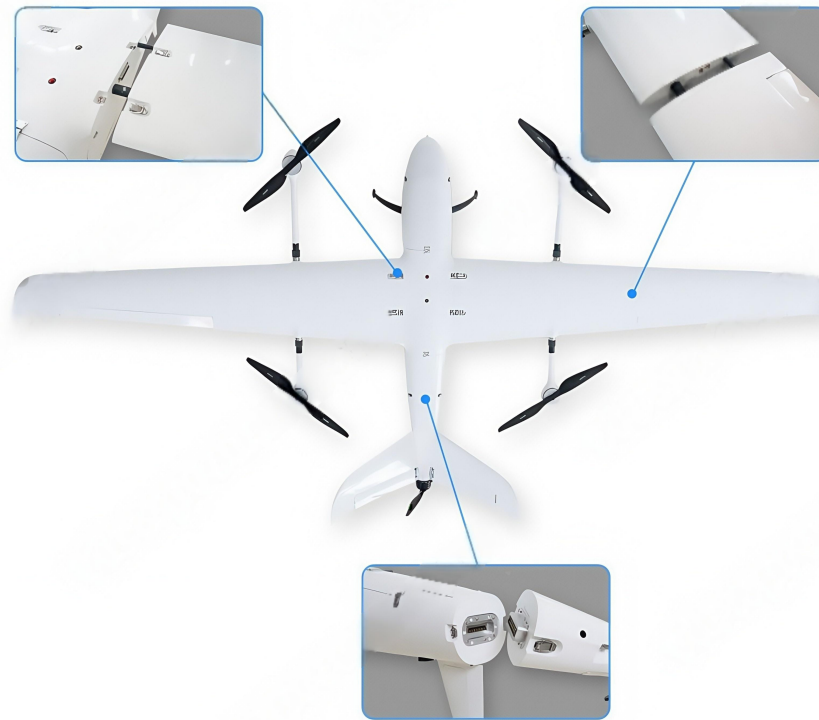


Image&data link: 30KM



Positioning accuracy: 0.1M

Quick release setup of wing and tail, quick assemble in 2minutes.



Foldable design of aircraft arm.





Package dimension: compact packing case, more convenient for international transportation



CONTACT CHINA MONEYPRO GROUP NOW:

EMAIL: SALES@MONEYPROUAV.COM

MOBILE: +86-18126437260 (WHAT'S UP) MS. AMY LUO