

# 4HRS

@5KG



## Moneypro M400

Long flight time Electric VTOL **4hrs @ 5kg** load



Wheelbase:

**4000** mm



Endurance:

**4** hours  
(@5kg load)

Max Cruising Speed

**33** m/s



Max Payload

**5** kg



Airframe Weight

**11.5** kg



MTOW

**31** kg





## Detail



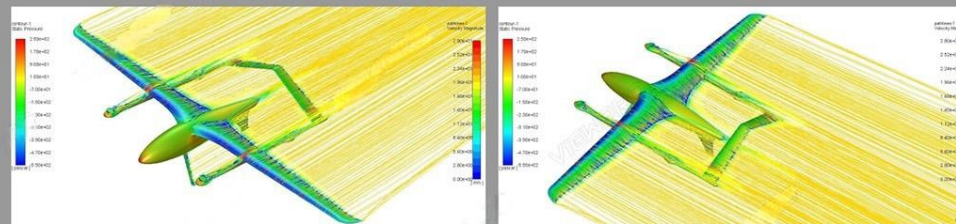




# 4hrs @ 5kg

**Excellent performance of  
endurance and payload capacity**

Compared with other 30kg MTOW VTOL fixed wing drone platform, MoneyproM400 features with more excellent performance of endurance and payload capacity. Maximum payload capacity is 5kg and endurance reaches 4 hrs @5kg load.

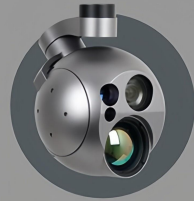


**Compact layout enhance  
flight efficiency**

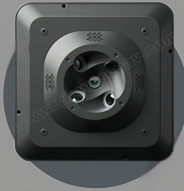
**16.2**  
Thrust-to-weight  
ratio

The arm of drone adopts the arch design, which perfectly combines aerodynamics in the engineering design, and minimize the airflow interference to wing.

## Supports Multiple Types of Payloads



Gimbal cameras



Mapping cameras



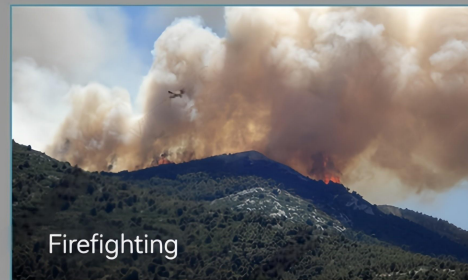
LiDAR



Cargo box

## Application

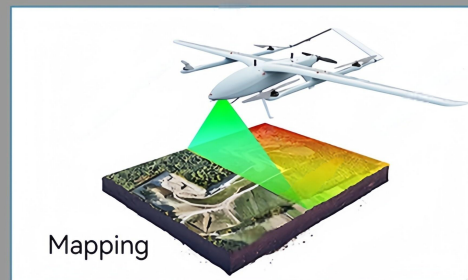
Flexible application in surveillance and inspection, fire fighting, environmental protection, delivery and other fields



Firefighting



Search & Rescue



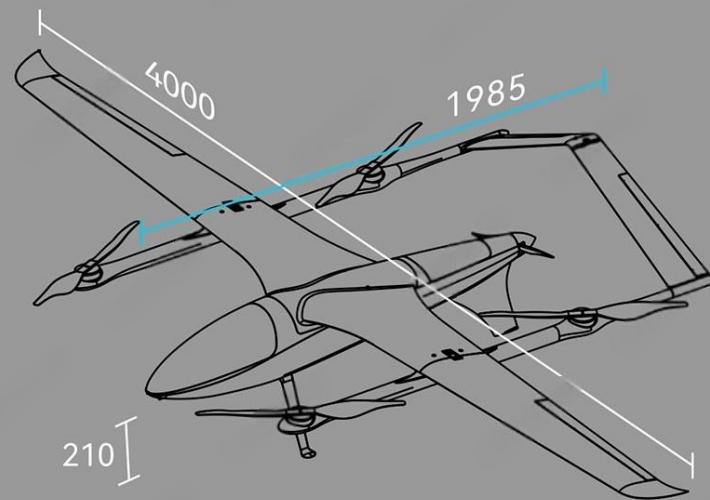
Mapping



Cargo Delivery



### Dimension (mm)



### Package



---

**CONTACT CHINA MONEYPRO GROUP NOW:**

**EMAIL: SALES@MONEYPROUAV.COM**

**MOBILE: +86-18126437260 (WHAT'S UP) MS. AMY LUO**