

# MONEYPRO M230

120min Long-endurance with 1kg Payload Compact  
VTOL Mapping UAV





Wingspan: 2300mm



Flight time: 120min (1kg payload)



MTOW: 8.2KG



Maximum load: 1.3KG



Maximum speed: 90KM/H



Ceiling height: 3000M



Flight radius: 100KM



Positioning accuracy: 0.1M

## 1 MIN QUICK ASSEMBLY

Quick assembly design, easy to complete assembly and disassembly without any tools, one person can complete it in one minute.



## LIGHT WEIGHT AND HIGH STRUCTURAL RIGIDITY

The whole machine is made of fiber and glass fiber composite materials, with light weight and high structural rigidity, which makes the flight more stable.



### FOLDABLE PROPELLERS

Save more space and maintenance cost without impacting the performance





## T TAIL INCREASE LIFT

The 230 vertical take-off and landing fixed wing adopts a T-shaped tail layout to increase lift and increase load capacity.



## CUSTOMIZED POWERFUL SYSTEM

The customized power system provides a powerful driving force for the drone. The 230's take-off weight can reach 8.2 kg, and its endurance is 130-160 minutes without load.



## SUPPORT RTK HIGH-PRECISION POSITIONING

Equipped with Here+ RTK base station (optional), the 230 vertical take-off and landing fixed wing can achieve centimeter-level positioning accuracy.



## ESC HEAT SINK EPOSED, BETTER HEAT DISSIPATION

The ESC module of the fixed wing is installed on the outside, and the heat dissipation effect is better.



It supports multiple mapping payloads: orthographic cameras, 5 lens oblique camera, hyperspectral cameras, multispectral cameras.

Mirrorless  
Camera



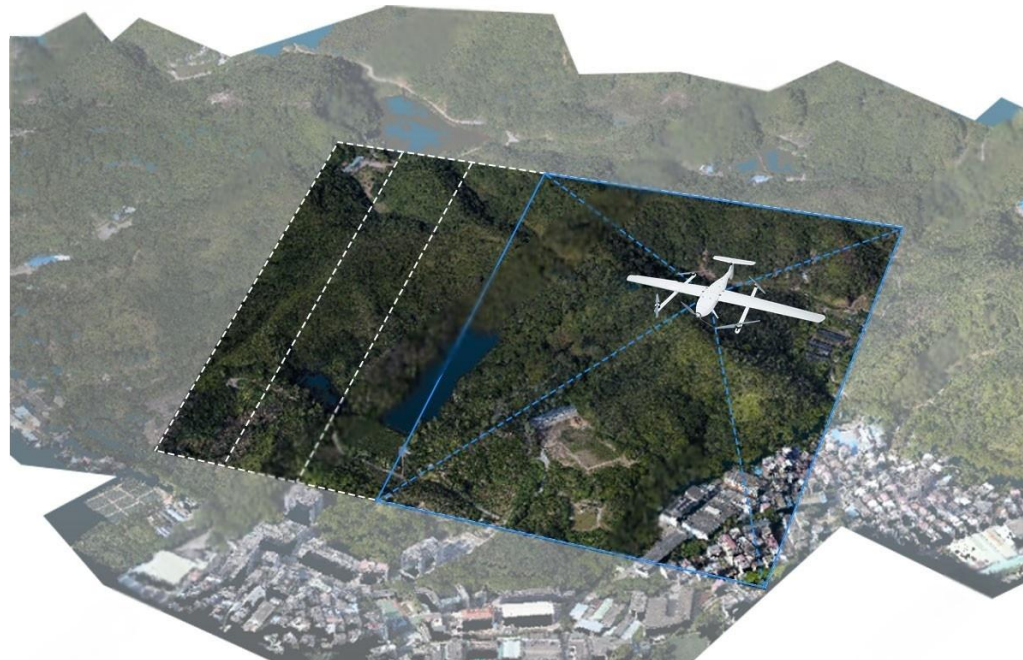
Orthograph  
Camera



Multispectral  
Camera

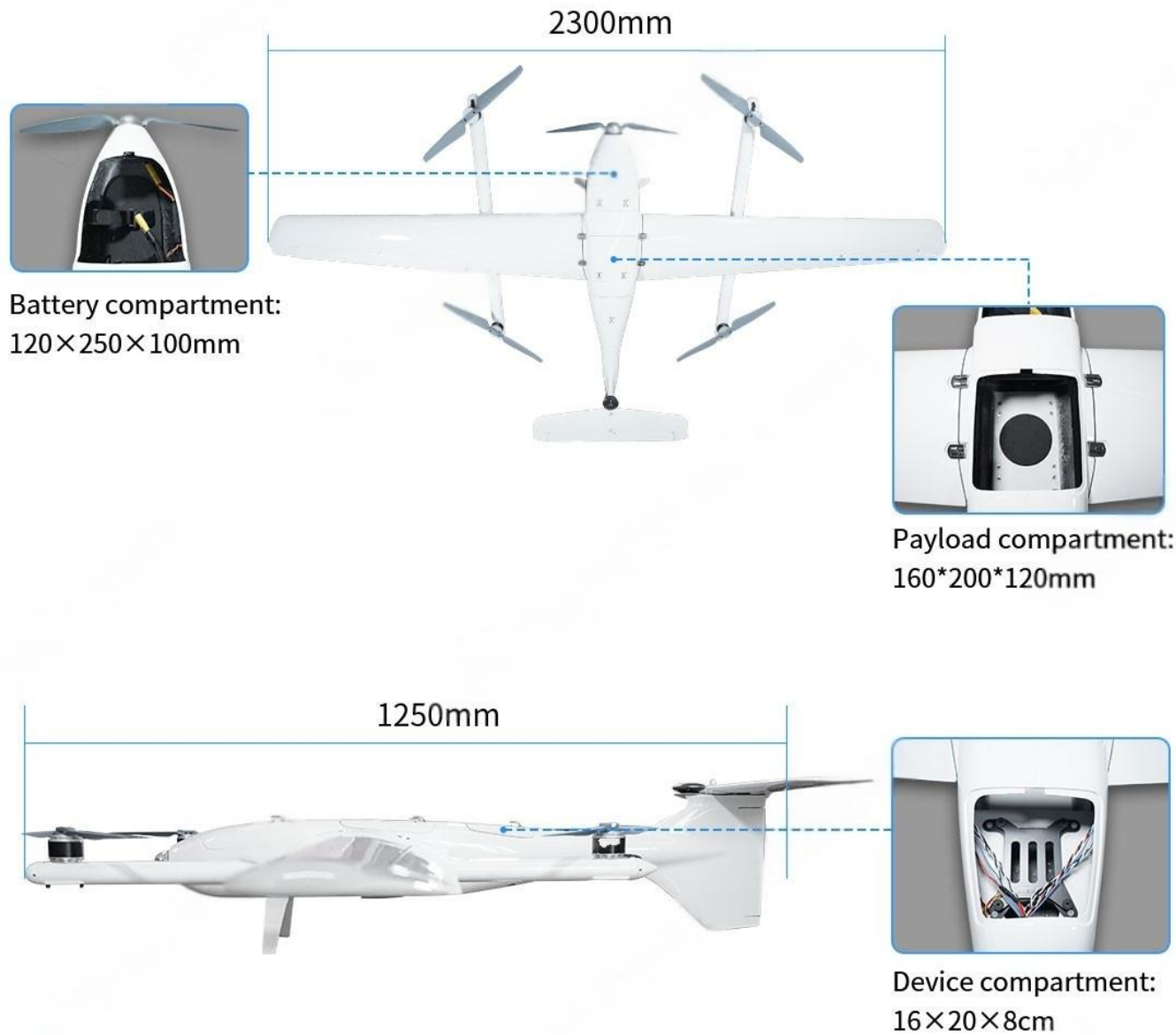


Hyperspectral  
Camera





## Dimensions



---

**CONTACT CHINA MONEYPRO GROUP NOW:**

**EMAIL: [SALES@MONEYPROUAV.COM](mailto:SALES@MONEYPROUAV.COM)**

**MOBILE: +86-18126437260 (WHAT'S UP) MS. AMY LUO**