

MoneyproM210

Long Endurance Light-duty VTOL Drone for Mapping and Surveillance



Wheelbase
2100mm



Endurance
127min
@600g payload



MTOW
7.5kg



Max Load
1kg



Maximum speed
21m/s



Tool-free
assembly

Durable and Lightweight





Self-locking folding structure, easy to use.



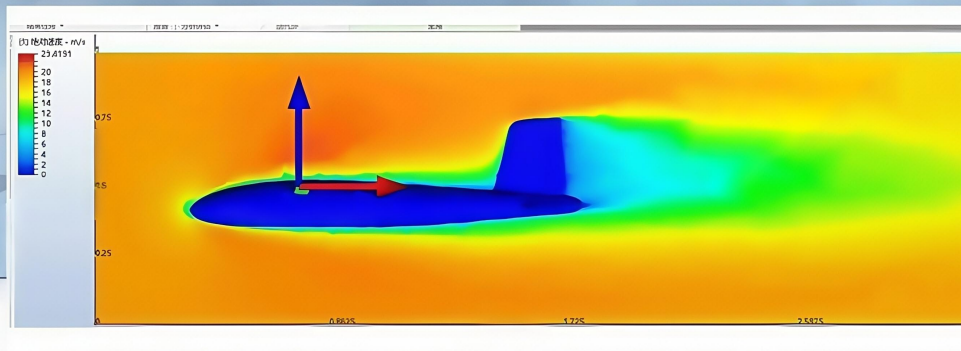
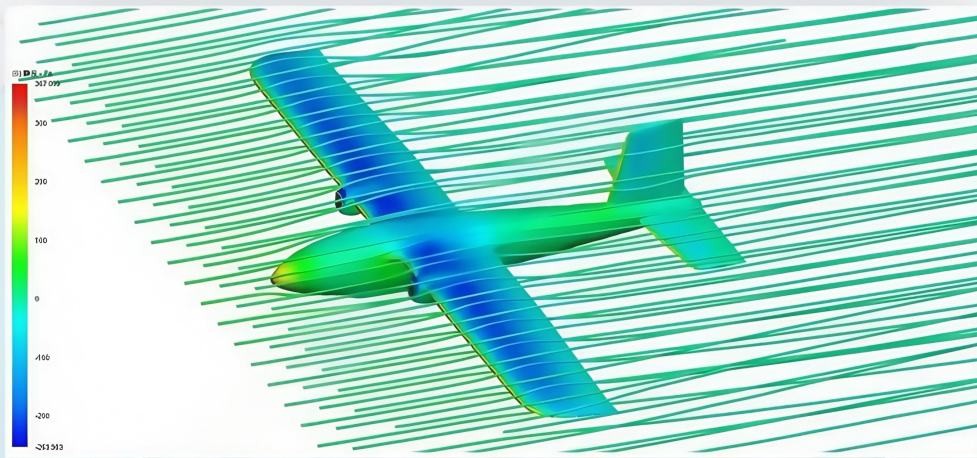
Five points in one piece Tool-free quick-release design



Automatically lock by one pushing, pull out by one pressing

Efficient Pneumatic Design

It adopts streamline modelling and inverted T layout, aerodynamic shape optimization, efficiently increases lift and reduces air resistance and power consumption.



4+1 and 4+2 Flight Modes Versions Optional

It adopts streamline modelling and inverted T layout, aerodynamic shape optimization, efficiently increases lift and reduces air resistance and power consumption.



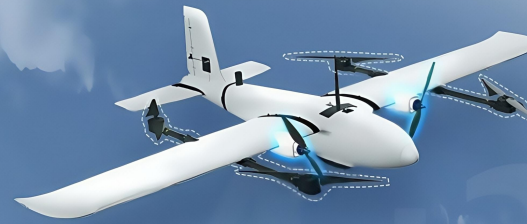
4+1 Mode Version

"4+1" motor design includes four lift motors and one fixed-wing motor, realizing space-efficient VTOL and fast-speed fixed wing task performance at the same time with powerful propulsion system.

"4+1" Endurance Performance:

112min/127km

- Speed 19m/s@600g payload
- Battery 6S@22000mAh
- MTOW 6.5 kg
- Altitude 500m



4+2 Mode Version

"4+2" motor design includes four lift motors and two thrust motors, which has the advantages of powerful pulling force and more load capacity.

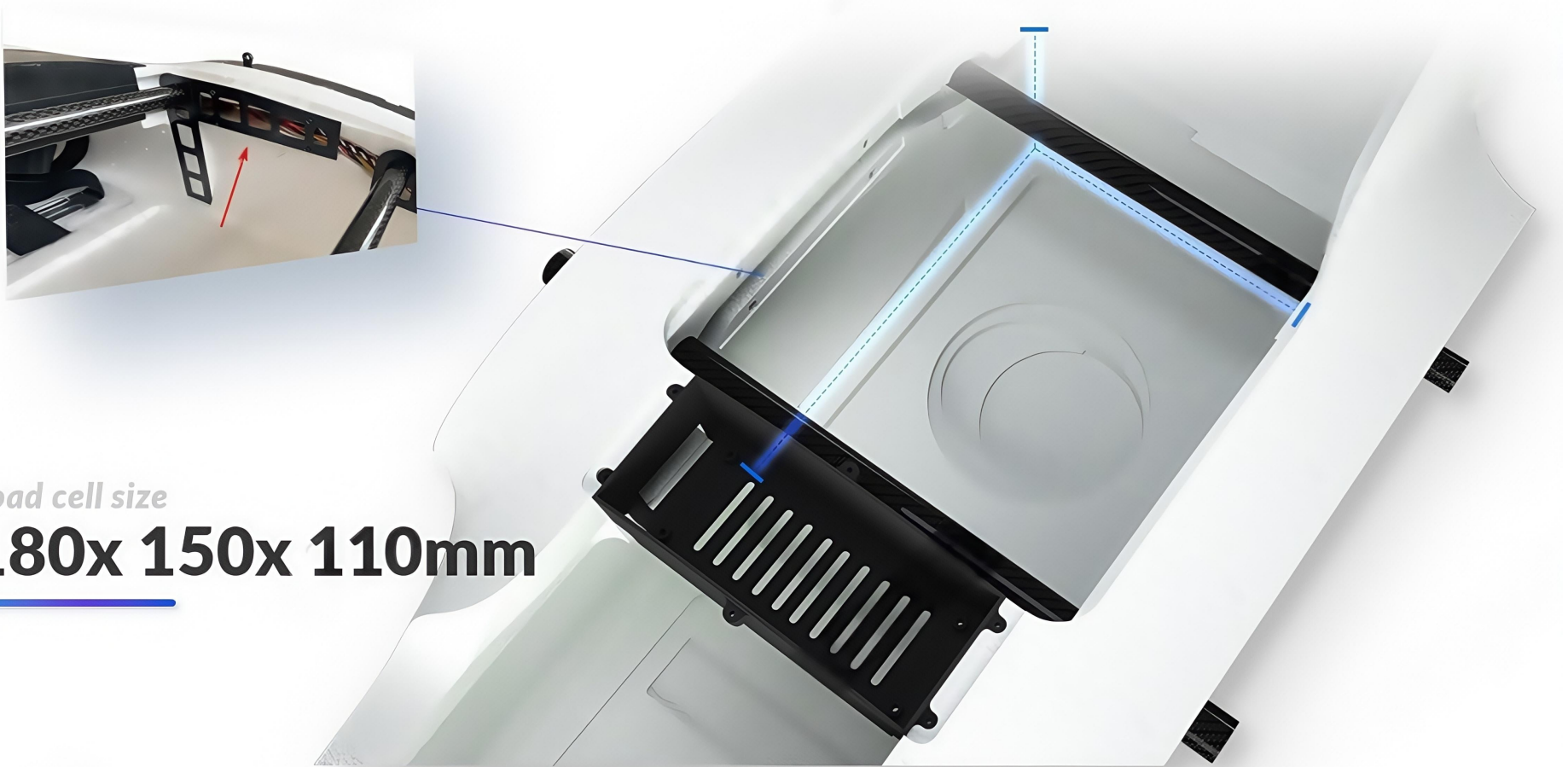
"4+2" Endurance Performance:

96min/105km

- Speed 19m/s@600g payload
- Battery 6S@22000mAh
- **MTOW 7.3kg**
- Altitude 500m

Big Inner Cabin For Payload

Accommodate various payload for different application.



Mapping Solution



Application

Surveying & Mapping



Training



Surveillance



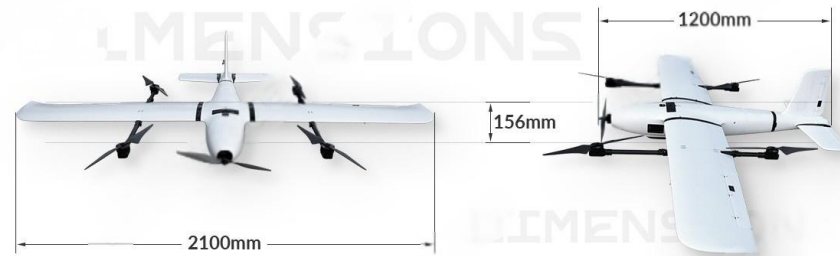
Search & Rescue



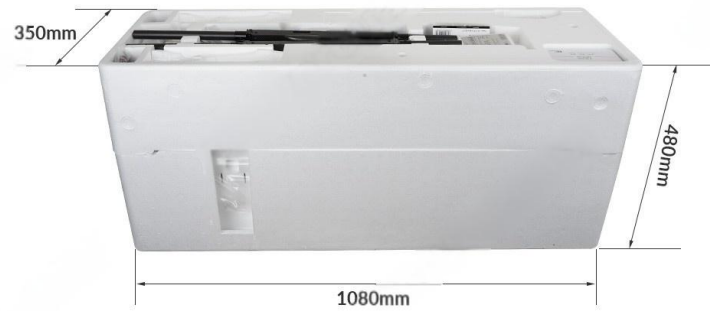
EF210

EXCELLENT POWER
STABILITY

Dimensions



Package Dimension



CONTACT CHINA MONEYPRO GROUP NOW:

EMAIL: SALES@MONEYPROUAV.COM

MOBILE: +86-18126437260 (WHAT'S UP) MS. AMY LUO