

# Moneypro M191S



# Medium & small area high precision missions require more efficient hovering long endurance UAV

## Features:

- Design for high precision tasks with small and medium area
- It has the characteristics of strong adaptability, long endurance, stable video transmission, simple & flexible operation, safety and reliability, etc.
- It can meet the long-distance inspection and monitoring tasks of complex operating environment, such as mountain area, river course, lake, ocean, plateau and so on.



**120min**  
Endurance



**30km HD**  
VideoLink



**7level**  
Wind Resist



**5200m**  
Max ASL Alt



**-20°C~55°C**  
Working Temp



**3min**  
Fast assembly

## Endurance&Transmission

One Flight to Achieve 120min Endurance.

**No need to change batteries.**

- Unique battery management system,Speed adaptative algorithm,greatly improves the flight endurance and flight effieciency.
- Integrated design of video and data link, independent frequency can be set independently
- Automatic frequency hopping, strong anti-interference ability,30KM HD Video link

\*120min max endurance: The data are the measured results of flying at a uniform speed of 14m/s under the third-level wind environment, and the actual use time may vary according to the environment, flight mode and the use of accessories.



## More Flexible and Efficient Operation

The command center can quickly deploy emergency work according to real-time map transmission information, on-site operators to control the aircraft and load, and share the on-site real-time information to each team synchronously, making teamwork more flexible and efficient.

Support A-B point  
switch control

Support unified  
command control

Support ONE GCS  
Multiple UAV mode



HQ unified  
monitoring

**Mission  
Mode**

Sub-division  
independent

Real time  
information

## Environment Adaptability

### Stable flight in complex environment



Unique variable pitch advantage, strong mobility, easy to adapt to complex environment.  
The rotor introduces a 3° pre-cone angle design for the first time to further improve flight stability.

#### Level 7

Wind Resistance  
Capability

#### 5200 Meters

Max Take-off Altitude  
(ASL)

#### -20°C~55°C

Working  
Temperature

## Avionics System

**Highly integrated avionics makes the flight more stable and reliable.**

New 5 in 1 avionics system,  
The volume was reduced by **76.9%**,  
The weight was reduced by **56.2%**



Avionics  
self testing  
system



Water  
proof  
layer



## Modular Design

### Easier and Faster Deployment



Fast

3minute fast  
deployment

Small

Unique **tower**  
structural design

Light

Aviation composition material  
percentage > 50%

## Gimbal

**Three-Axis Gimbal+Unique Vibration Reduction Method  
Realize better video quality**



## Six Safety Measures Makes flight more reliable

Obstacle  
Avoidance



Night  
Navigation  
on light



Encrypted  
Datalink



Redundant  
Backup



Avionics  
Self-exam



Active  
Radiation

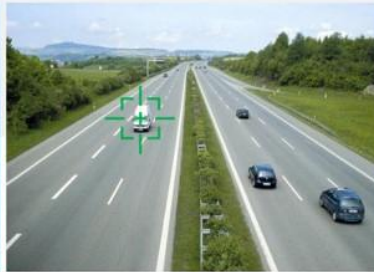


## Recommended Payload

### 30X EO Camera with Laser Range Finder



30X HD ZOOMING



TARGET ID./TRACKING



LOCATE TARGET

## Payload

- 40X EO LRF Camera+Loud Speaker
- 40X EO LRF Camera+Auto Searchlight
- Oblique camera
- Multi-spectral camera



UAV Wireless Long Range  
Megaphone Supports  
Pre-record

- Loud & clear Sound
- 78db 150m away
- Easy to operate
- DC 12 V Power Supply

40x EO+IR AI Object Tracking  
and LRF Gimbal Camera

- 40x optical zoom
- Thermal imager 640\*512,  
19mm lens, 12μm
- Laser range 5~3000m



UAV Searchlight Device

- 4000lm
- Working voltage: 4S~6S
- Illumination distance: 150m



## Configurational Equipment

- Transportation box
- Dual Screen GCS
- Solid battery
- Water-proof backpack
- Remote control



---

**CONTACT CHINA MONEYPRO GROUP NOW:**

**EMAIL: [SALES@MONEYPROUAV.COM](mailto:SALES@MONEYPROUAV.COM)**

**MOBILE: +86-18126437260 (WHAT'S UP) MS. AMY LUO**