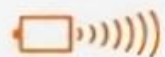


Two models

TF03

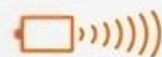
-

TF03-100

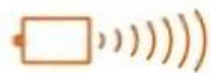


Operating range
0.1-100m

TF03-180



Operating range
0.1-180m



Operating range
0.1-180 m



Enclosure rating
IP67



FOV
0.5°



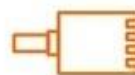
Product Certification
CE



Frame rate
1-10 Khz



Ambient light immunity
100 Klux



Communication interface
UART/CAN



Weight
77 g \pm 3g

Industrial Safety Distance Warning Tower Crane

TF03

-

There is no small matter in the field of industry, with 10k Hz frequency and customized measuring range, Benewake LiDAR could warn in safety distance and trigger alarm system to decrease accident rate in all kinds of industrial environment. Now Benewake LiDAR has been applied all kinds of tower crane devices in large number and safety distance alarm has been realized.

LiDAR Distance Sensor



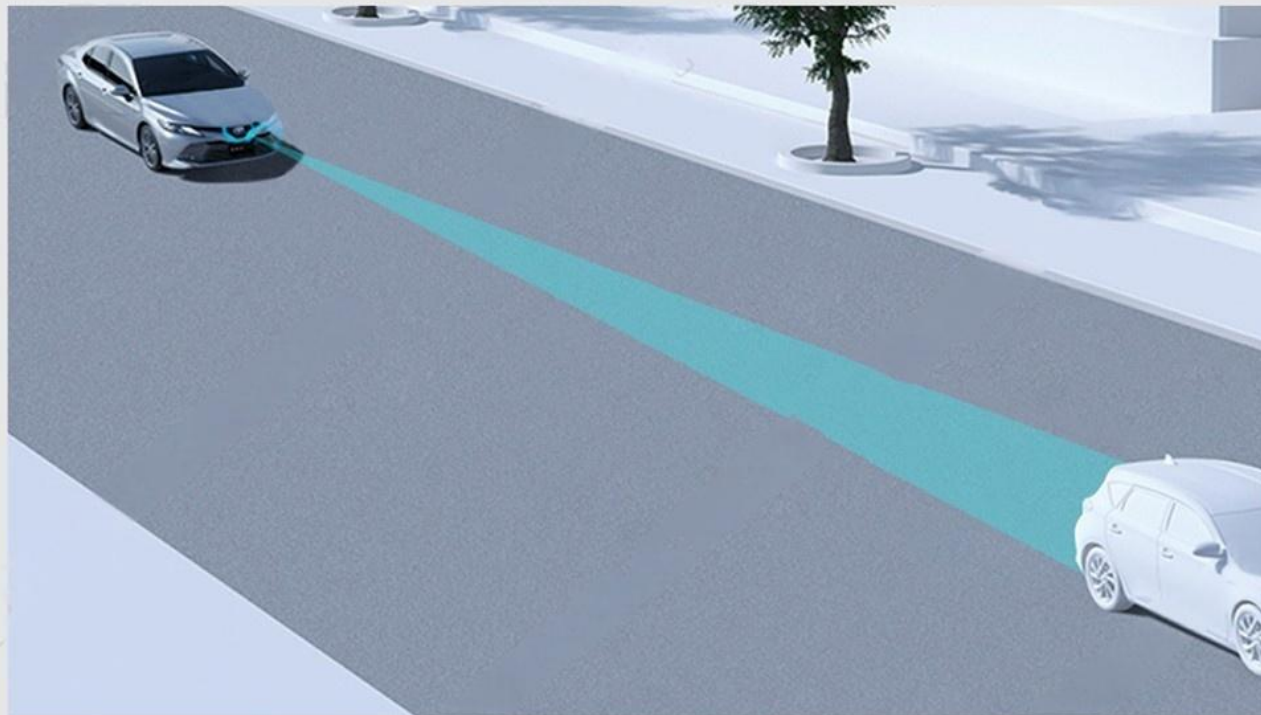
Vehicle Crash Warning

TF03

Benewake vehicle collision prevention intelligent warning device consists of a single point long-range LiDAR and the main control board (according to different needs, a variety of micro-controllers can be selected). The LiDAR is installed in front of the vehicle, and due to its small size it can be integrated in the vehicle cooling grille or near the license plate through embedded installation. The main control board collects and analyzes the LiDAR data and alerts the driver according to the set threshold, reminding the driver that the distance between vehicle and obstacle in front has been less than the safe distance.

The longest range of the device can reach 350 meters, millisecond response speed, easy to install, simple operation, can be mounted on all kinds of vehicles, such as engineering vehicles, transportation vehicles, special vehicles and private passenger vehicles. It can identify and judge a variety of potentially dangerous situations, and help drivers to reduce the speed and avoid collisions through different audible and visual alerts.

LiDAR Distance Sensor



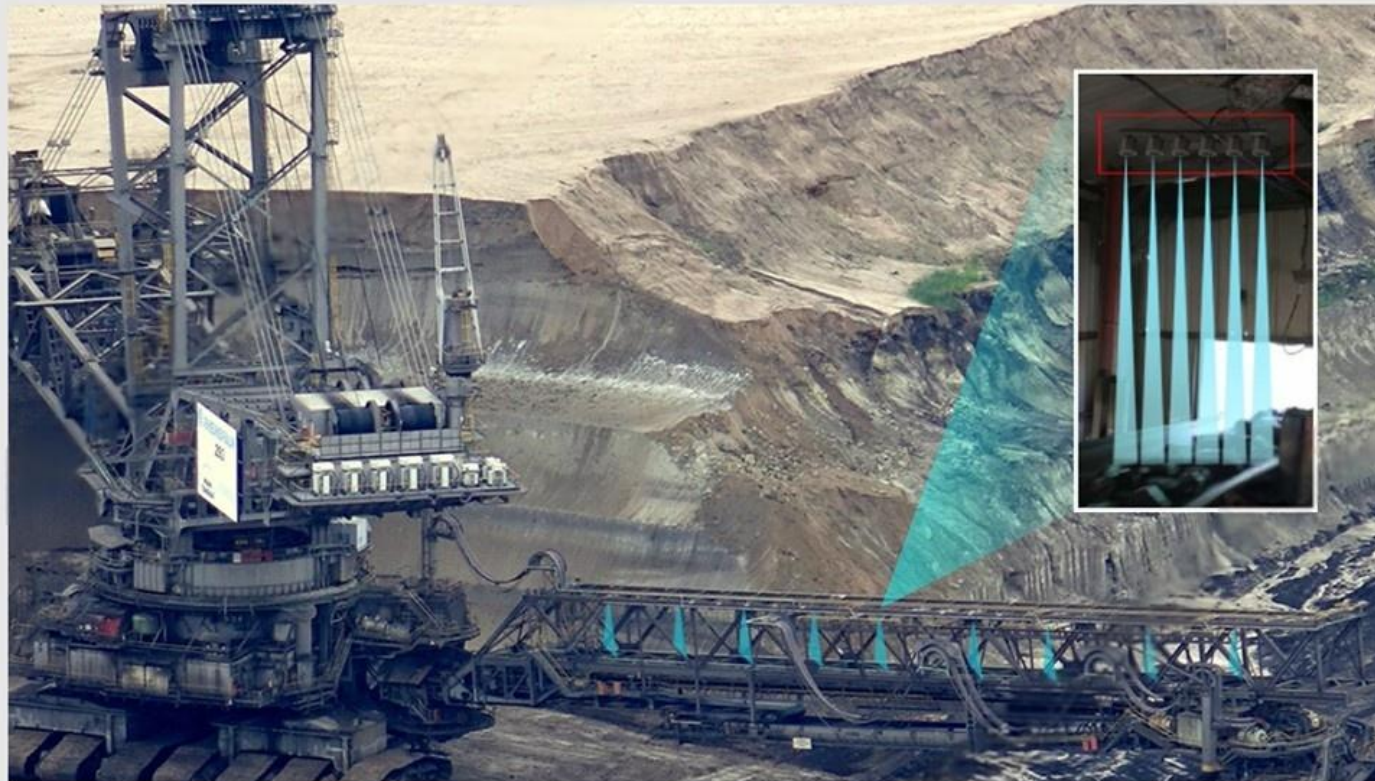
Networking Scheme of Coal Flow Volume Detection

TF03

-

Install the LiDAR of the system above the conveyor belt. According to the coal height change curve, actual belt speed and coal flow cross-sectional area obtained by the LiDAR during the operation of the conveyor belt. The dispersion per unit time is calculated through the calculation within the system. The coal volume can be calculated according to the coal volume coefficient per unit volume at the same time.

LiDAR Distance Sensor

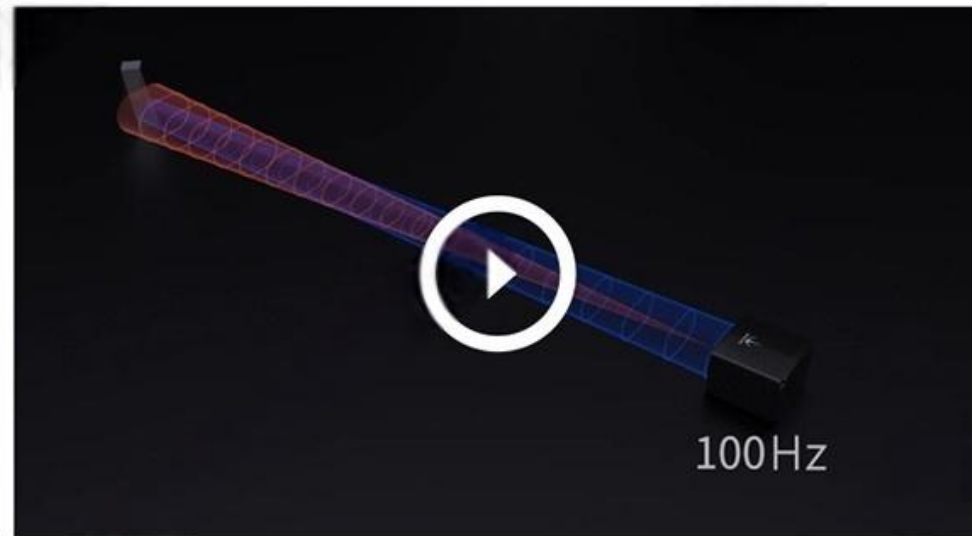


Excellent Performance

Compact Size

TF03 adopts the pulsed time-of-flight principle. The unique design of the optical system and the signal processing circuit improved the detecting performance in a compact size. In addition to increasing the range to more than 100 meters, the key parameters also have excellent performance in the whole range, such as distance resolution, accuracy, repeatability and detection frequency.

LIDAR Distance Sensor



Customized Parameters

TF03

-

Multiple parameters of TF03 can be configured by customers, including the measuring frequency, baud rate, trigger mode, over-range assignment, etc. TF03 is also equipped BootLoader function, enabling users to upgrade product firmware locally.

LIDAR Distance Sensor



- **Measuring frequency**
- **Baud rate**
- **Trigger mode**
- **Over-range assignment**

CONTACT CHINA MONEYPRO GROUP NOW:

EMAIL: SALES@MONEYPROUAV.COM

MOBILE: +86-18126437260 (WHAT'S UP) MS. AMY LUO